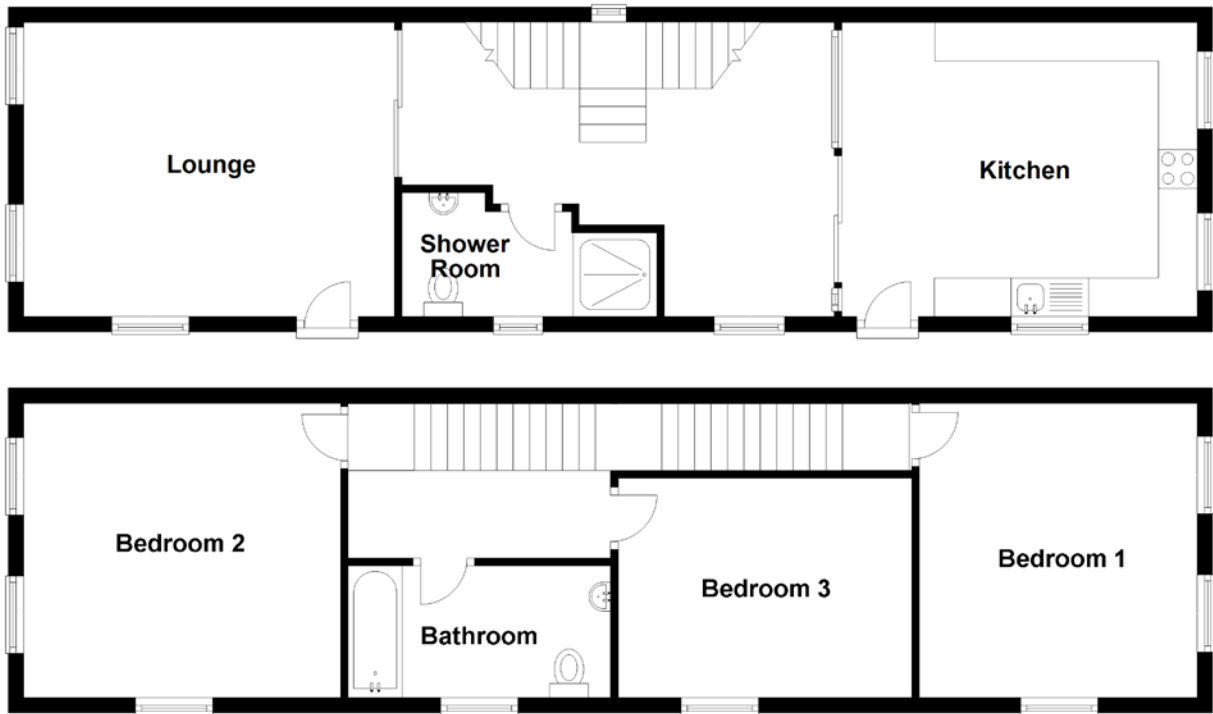


# FLOOR PLAN, DIMENSIONS & MAP



Approximate Dimensions (Taken from the widest point)

Lounge	4.80m (15'9") x 3.80m (12'6")
Kitchen	4.60m (15'1") x 3.90m (12'10")
Shower Room	3.30m (10'10") x 1.60m (5'3")
Bedroom 1	4.00m (13'1") x 3.60m (11'10")
Bedroom 2	4.10m (13'5") x 4.00m (13'1")
Bedroom 3	3.80m (12'6") x 2.70m (8'10") pl

Bathroom

3.40m (11'2") x 1.70m (5'7")

Gross internal floor area (m<sup>2</sup>): 121m<sup>2</sup>

EPC Rating: C

Extras (Included in the sale): All fitted floor coverings, blinds, curtains, integrated kitchen appliances and light fittings.

