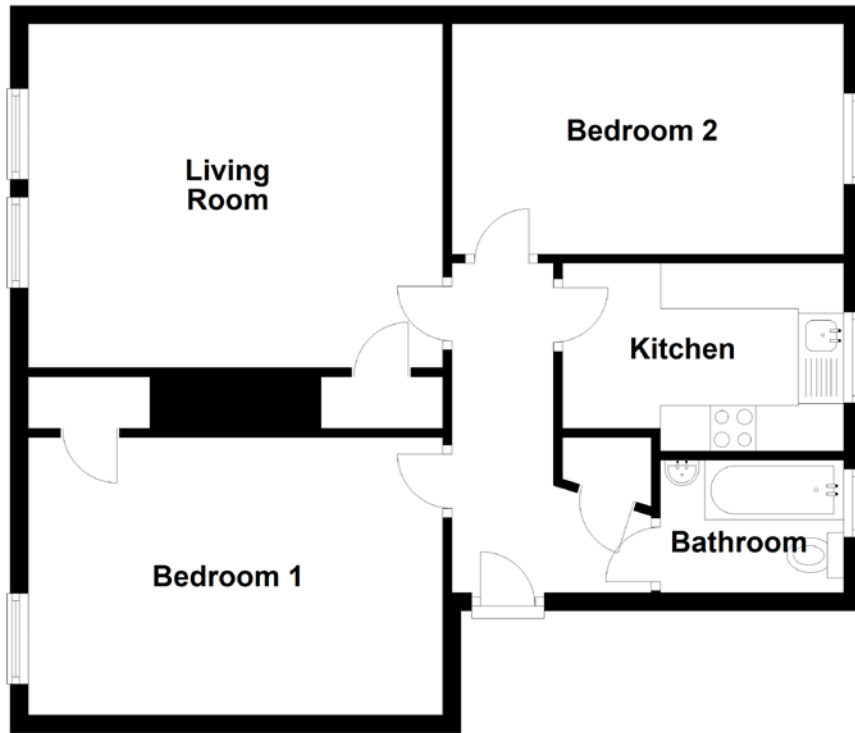


FLOOR PLAN, DIMENSIONS & MAP



Approximate Dimensions (Taken from the widest point)

Living Room 4.57m (15') x 3.79m (12'5")
Kitchen 3.10m (10'2") x 2.07m (6'9")
Bedroom 1 4.55m (14'11") x 3.06m (10')

Bedroom 2 4.32m (14'2") x 2.54m (8'4")
Bathroom 2.02m (6'8") x 1.46m (4'9")

Gross internal floor area (m²): 63m²
EPC Rating: C

