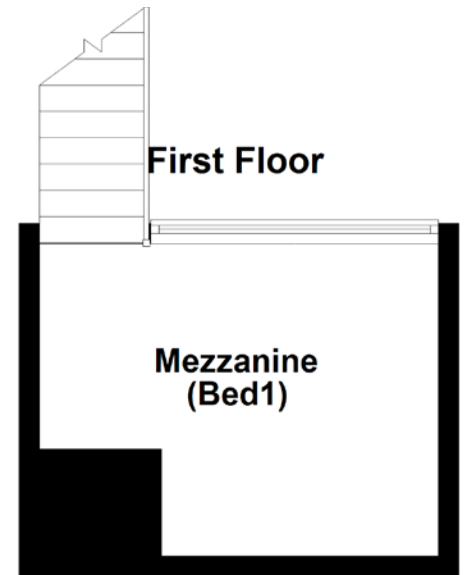
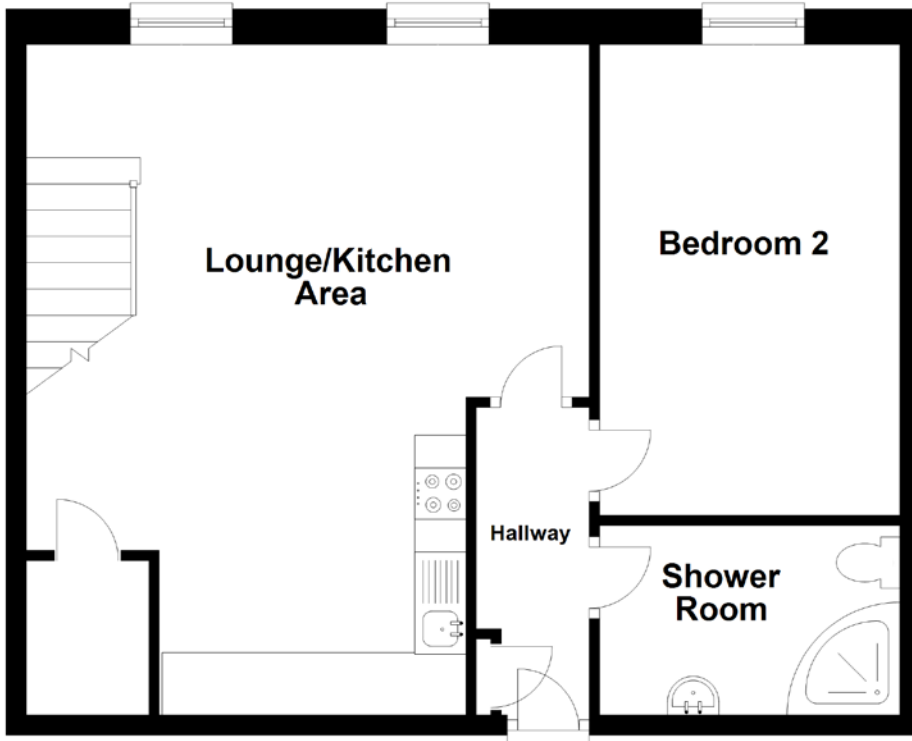


# FLOOR PLAN, DIMENSIONS & MAP



Approximate Dimensions  
(Taken from the widest point)

Lounge/Kitchen Area 6.55m (21'6") x 5.50m (18'1")  
Bedroom 2 4.60m (15'1") x 2.65m (8'8")

Shower Room 2.30m (7'7") x 1.60m (5'3")  
Mezzanine (Bed1) 3.90m (12'10") x 3.05m (10')

Gross internal floor area (m<sup>2</sup>): 46m<sup>2</sup>  
EPC Rating: E

