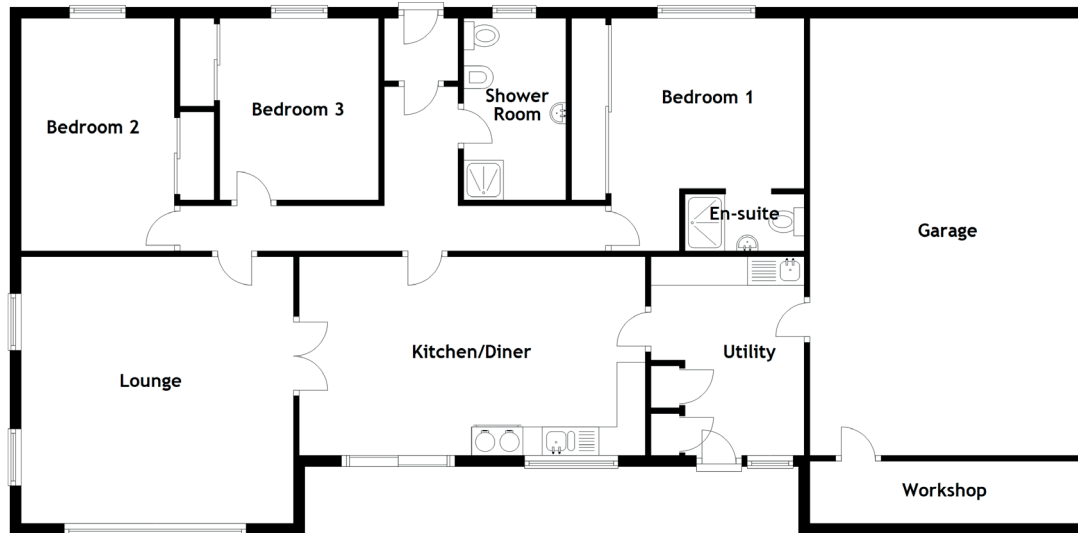


# Woodbank Croft

DRUMBLADE, HUNTLY, ABERDEENSHIRE, AB54 6EP



Approximate Dimensions  
(Taken from the widest point)

Lounge	4.80m (15'9") x 4.70m (15'5")
Kitchen/Diner	6.10m (20') x 3.50m (11'6")
Utility	3.50m (11'6") x 2.70m (8'10")
Bedroom 1	4.10m (13'5") x 3.40m (11'2")
En-suite	2.10m (6'11") x 1.00m (3'3")
Bedroom 2	4.10m (13'5") x 2.70m (8'10")
Bedroom 3	3.20m (10'6") x 2.80m (9'2")
Shower Room	3.20m (10'6") x 1.80m (5'11")

Gross internal floor area (m<sup>2</sup>): 113m<sup>2</sup>

EPC Rating: E