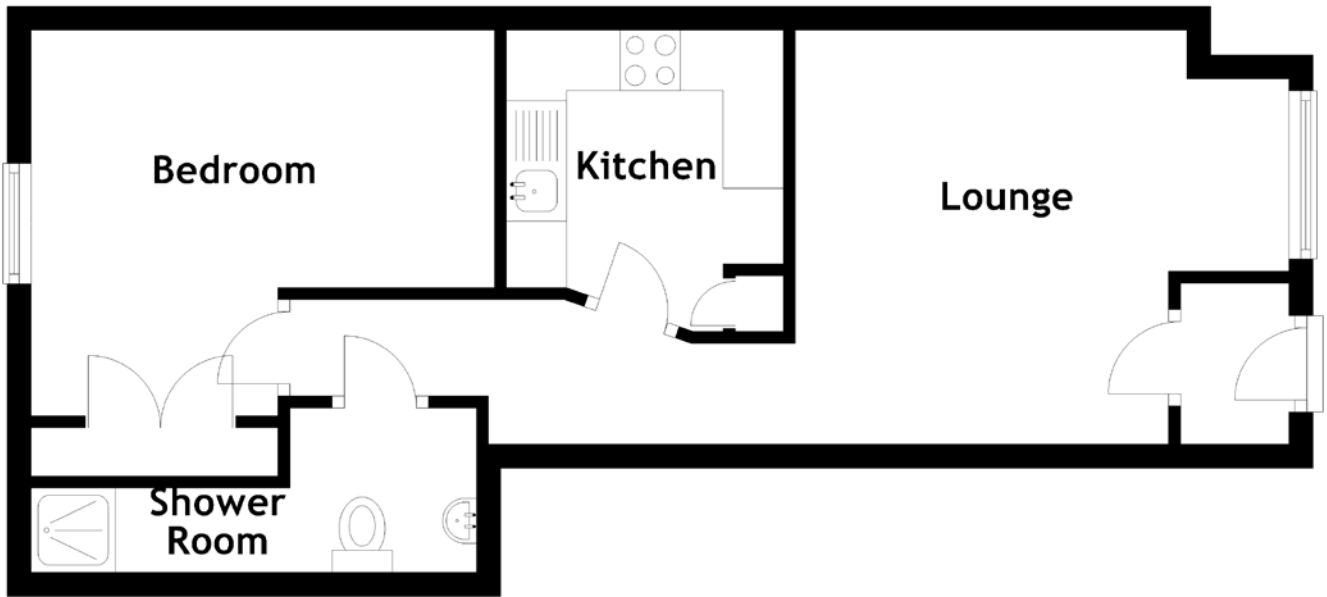


FLOOR PLAN, DIMENSIONS & MAP



Approximate Dimensions
(Taken from the widest point)

Bedroom 3.85m (12'8") x 3.20m (10'6")
Shower Room 3.70m (12'2") x 1.36m (4'6")

Lounge 4.00m (13'1") x 3.60m (11'10")
Kitchen 2.50m (8'2") x 2.30m (7'7")

Gross internal floor area (m²): 42m²
EPC Rating: E

