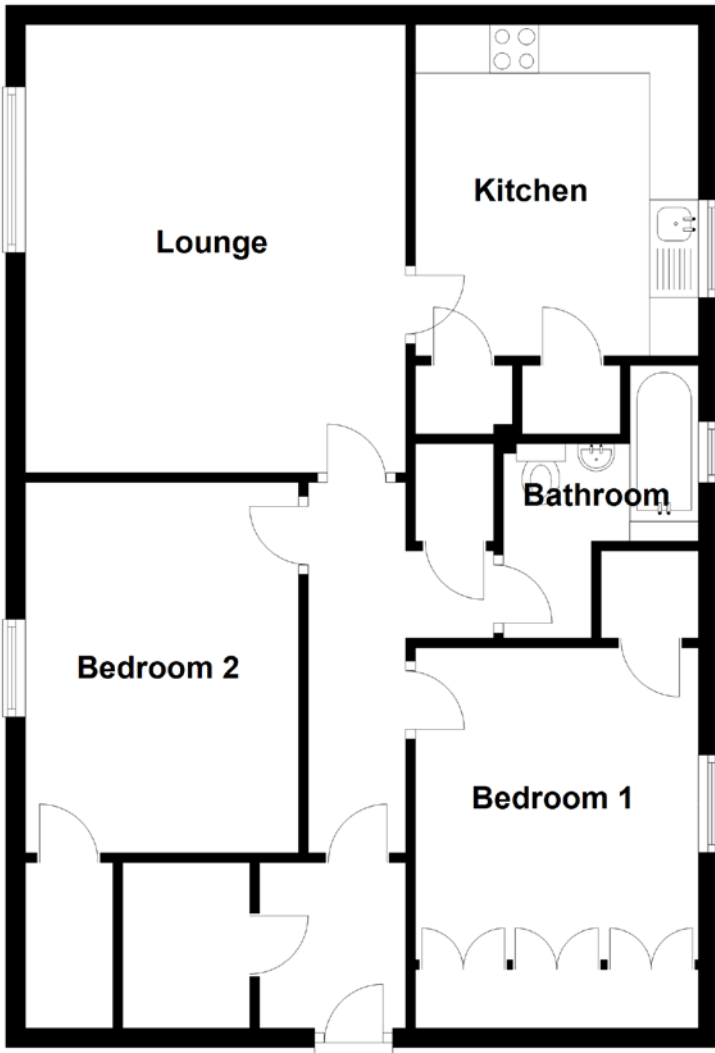


FLOOR PLAN, DIMENSIONS & MAP



Approximate Dimensions
(Taken from the widest point)

Lounge	4.60m (15'1") x 3.90m (12'10")
Kitchen	3.40m (11'2") x 2.90m (9'6")
Bedroom 1	3.20m (10'6") x 2.90m (9'6")
Bedroom 2	3.80m (12'6") x 2.80m (9'2")
Bathroom	2.00m (6'7") x 2.00m (6'7")

Gross internal floor area (m²): 71m²

EPC Rating: C

