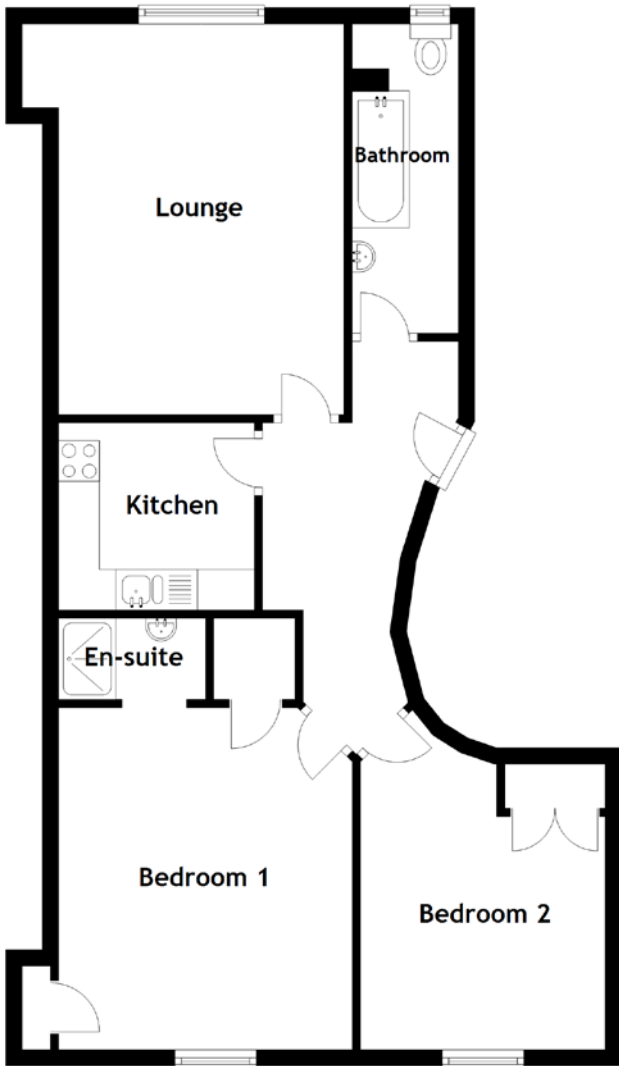


# FLOOR PLAN, DIMENSIONS & MAP



Approximate Dimensions  
(Taken from the widest point)

Lounge	4.80m (15'9") x 3.50m (11'6")
Kitchen	2.40m (7'10") x 2.30m (7'7")
Bathroom	3.80m (12'6") x 1.30m (4'3")
Bedroom 1	4.20m (13'9") x 3.60m (11'10")
En-suite	1.80m (5'11") x 1.00m (3'3")
Bedroom 2	3.86m (12'8") x 3.00m (9'10")

Gross internal floor area (m<sup>2</sup>): 66m<sup>2</sup>

EPC Rating: C

