

OUTBUILDINGS

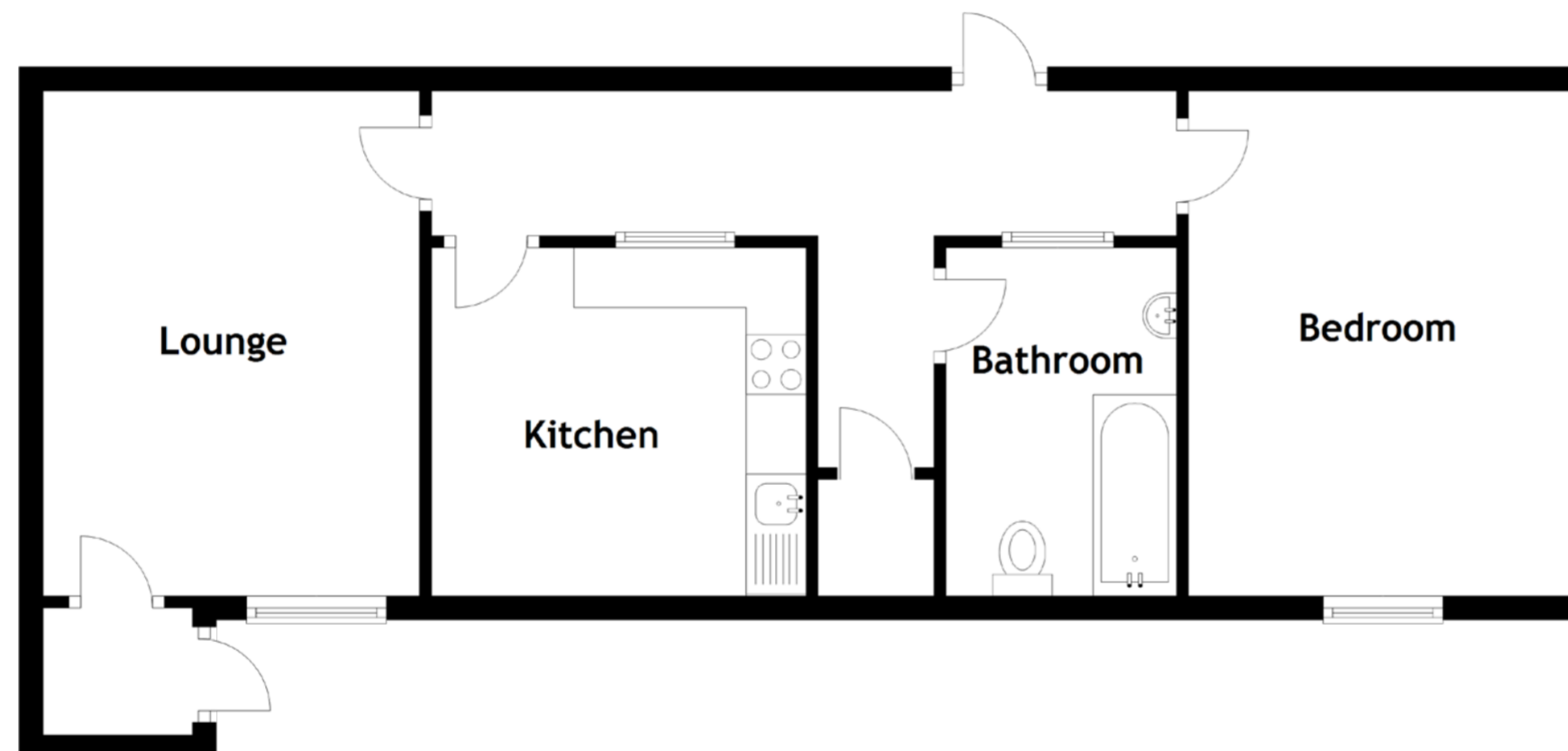


APPROXIMATE DIMENSIONS

(TAKEN FROM THE WIDEST POINT)

GP1	22.60m (74'2") x 8.93m (29'4")
GP2	13.50m (44'4") x 12.81m (42')
Office	5.10m (16'9") x 4.71m (15'5")
GP3	8.59m (28'2") x 5.75m (18'10")
Kitchen	4.30m (14'1") x 3.41m (11'2")
WC	1.96m (6'5") x 1.59m (5'3")
GP4	9.60m (31'6") x 5.51m (18'1")
GP5	9.65m (31'8") x 5.51m (18'1")
GP6	9.60m (31'6") x 5.51m (18'1")
GP7	7.16m (23'6") x 5.21m (17'1")
GP8	7.16m (23'6") x 5.21m (17'1")
Garage 1	5.98m (19'7") x 4.77m (15'8")
Garage 2	6.00m (19'8") x 4.75m (15'7")
Barn	30.52m (100'2") x 21.40m (70'3")

COTTAGE

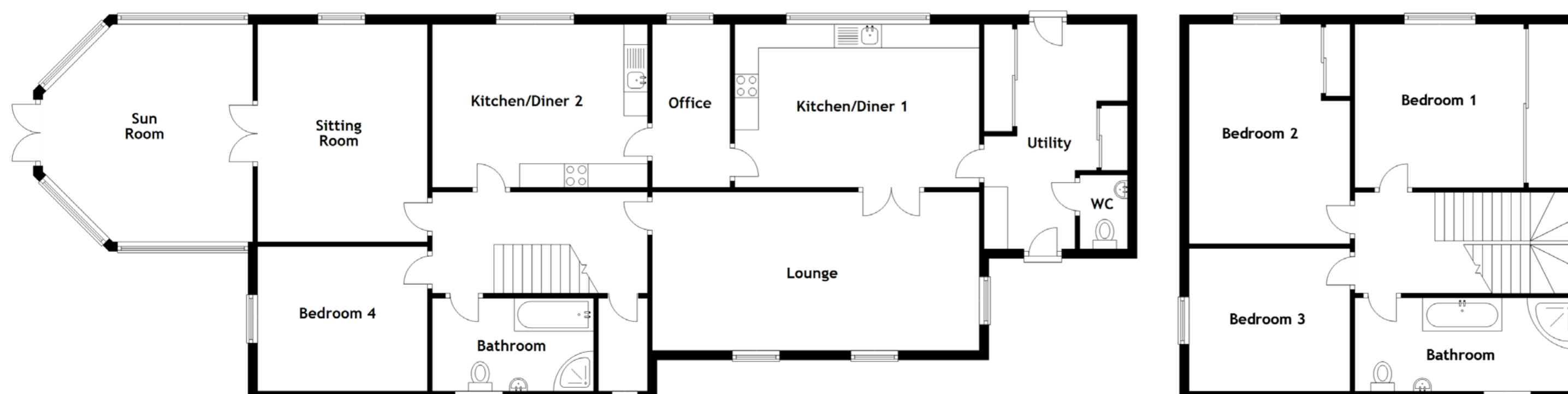


APPROXIMATE DIMENSIONS

(TAKEN FROM THE WIDEST POINT)

Lounge	4.49m (14'9") x 3.15m (10'4")
Kitchen	3.13m (10'3") x 2.99m (9'10")
Bedroom	4.22m (13'10") x 3.25m (10'8")
Bathroom	2.91m (9'7") x 1.93m (6'4")

HOUSE



APPROXIMATE DIMENSIONS

(TAKEN FROM THE WIDEST POINT)

Ground Floor	
Lounge	6.95m (22'10") x 3.35m (11')
Kitchen/Diner 1	5.18m (17') x 3.45m (11'4")
Utility	4.75m (15'7") x 3.04m (10')
WC	1.56m (5'1") x 1.01m (3'4")
Office	3.45m (11'4") x 1.65m (5'5")
Kitchen/Diner 2	4.56m (15') x 3.40m (11'2")
Bedroom 4	3.60m (11'10") x 3.06m (10')
Bathroom	3.42m (11'3") x 1.97m (6'6")
Sitting Room	4.60m (15'1") x 3.60m (11'10")
Sun Room	4.60m (15'1") x 4.45m (14'7")
First Floor	
Bedroom 1	3.58m (11'9") x 3.45m (11'4")
Bedroom 2	4.88m (16') x 3.41m (11'2")
Bedroom 3	3.57m (11'9") x 3.02m (9'11")
Bathroom	4.75m (15'7") x 1.95m (6'5")