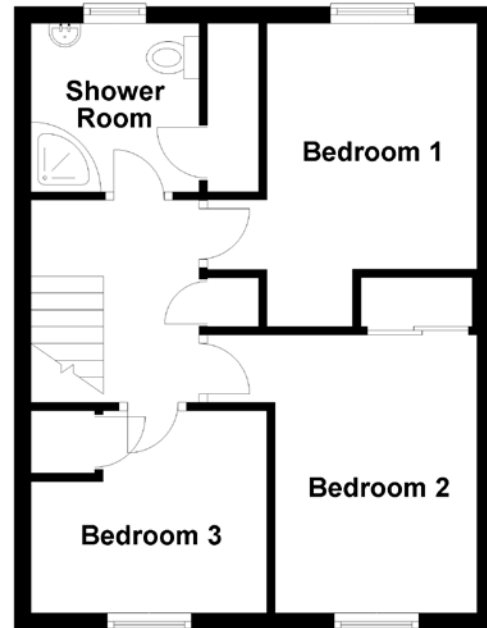
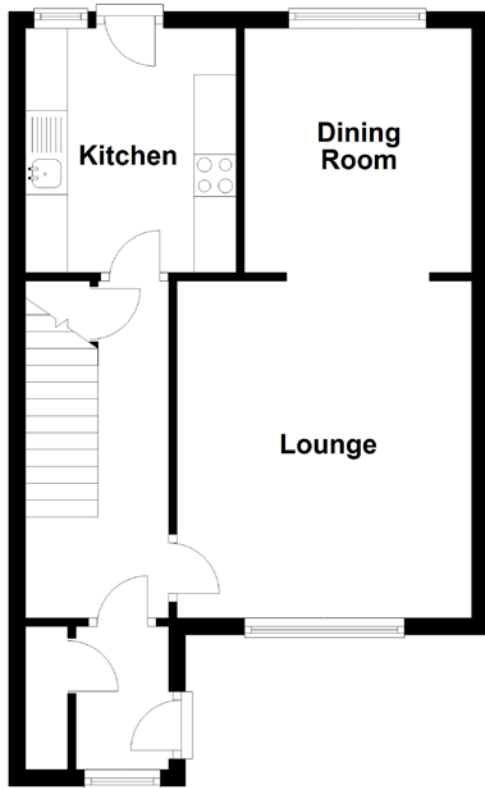


FLOOR PLAN, DIMENSIONS & MAP



Approximate Dimensions
(Taken from the widest point)

Lounge	4.00m (13'1") x 3.50m (11'6")
Dining Room	2.90m (9'6") x 2.70m (8'10")
Kitchen	3.00m (9'10") x 2.50m (8'2")
Bedroom 1	3.60m (11'10") x 3.40m (11'2")
Bedroom 2	3.50m (11'6") x 3.40m (11'2")

Bedroom 3	2.80m (9'2") x 2.40m (7'10")
Shower Room	2.00m (6'7") x 2.00m (6'7")

Gross internal floor area (m²): 80m²
EPC Rating: C

Extras (Included in the sale): Floor coverings and light fittings.

