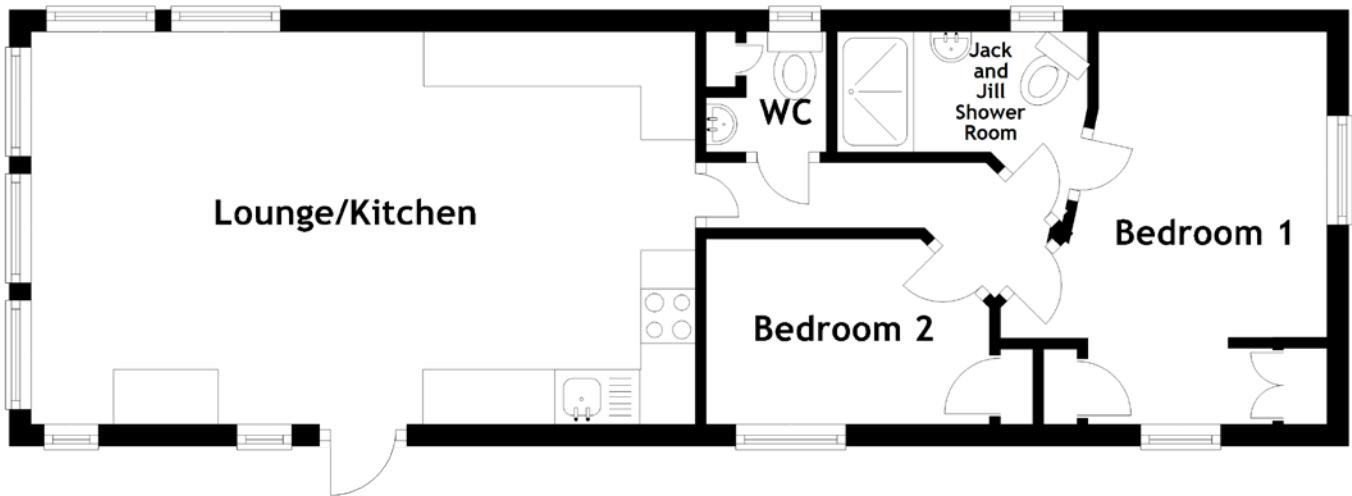


FLOOR PLAN, DIMENSIONS & MAP



Approximate Dimensions (Taken from the widest point)

Lounge/Kitchen	6.10m (20') x 3.60m (11'10")
Bedroom 1	3.60m (11'10") x 3.00m (9'10")
Bedroom 2	2.60m (8'6") x 1.70m (5'7")
WC	1.10m (3'7") x 1.10m (3'7")
Jack & Jill Shower	2.30m (7'7") x 1.50m (4'11")

Gross internal floor area (m²): n/a

EPC Rating: n/a

Extras (Included in the sale): The contents of the lodge can be included in the sale including furniture, beds, bedding and other non-integrated kitchen items depending on offer amount.

