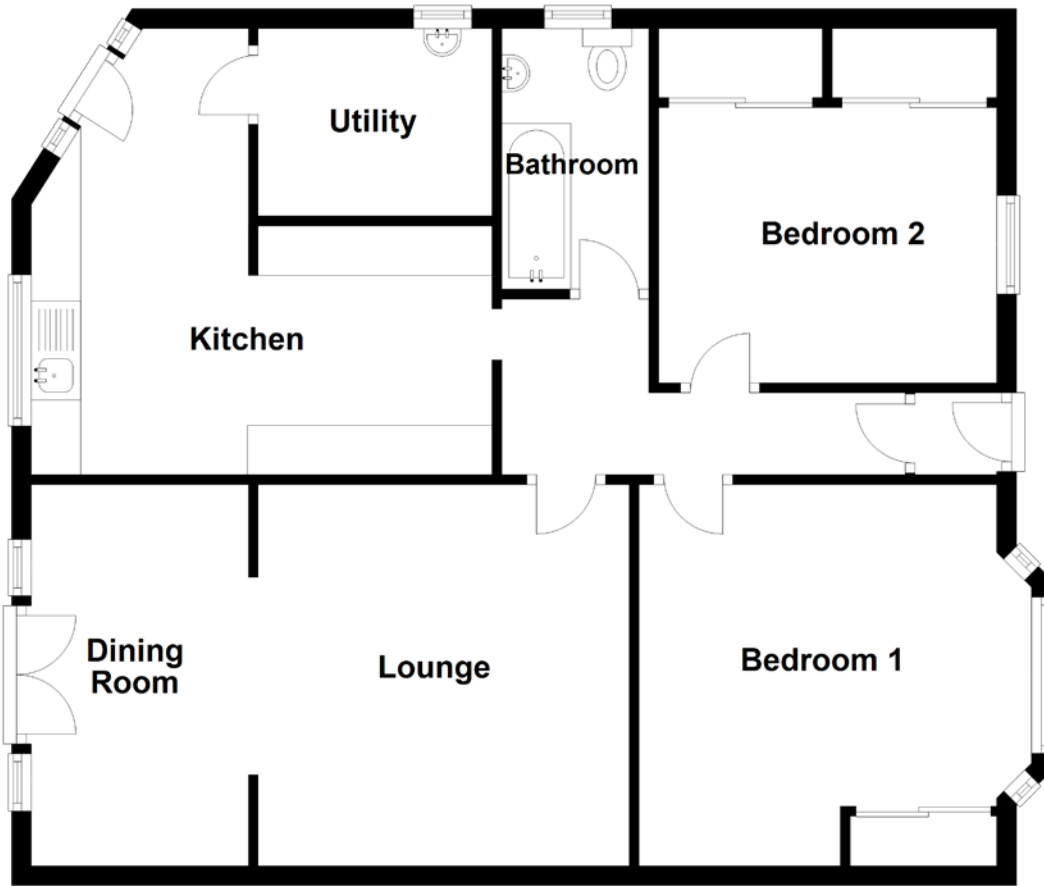


FLOOR PLAN, DIMENSIONS & MAP



Approximate Dimensions
(Taken from the widest point)

Lounge 4.03m (13'3") x 3.76m (12'4")
 Dining Room 4.04m (13'3") x 2.20m (7'3")
 Kitchen 4.67m (15'4") x 4.52m (14'10")
 Utility 2.37m (7'9") x 1.90m (6'3")

Bedroom 1 3.98m (13'1") x 3.86m (12'8")
 Bedroom 2 3.43m (11'3") x 2.79m (9'2")
 Bathroom 2.64m (8'8") x 1.49m (4'11")

Gross internal floor area (m²): 88m²

EPC Rating: D

