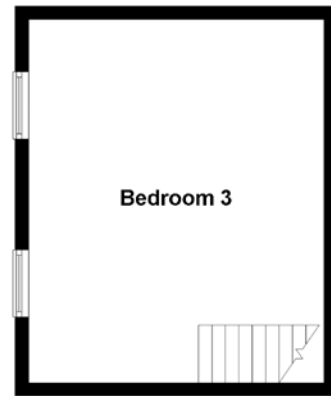
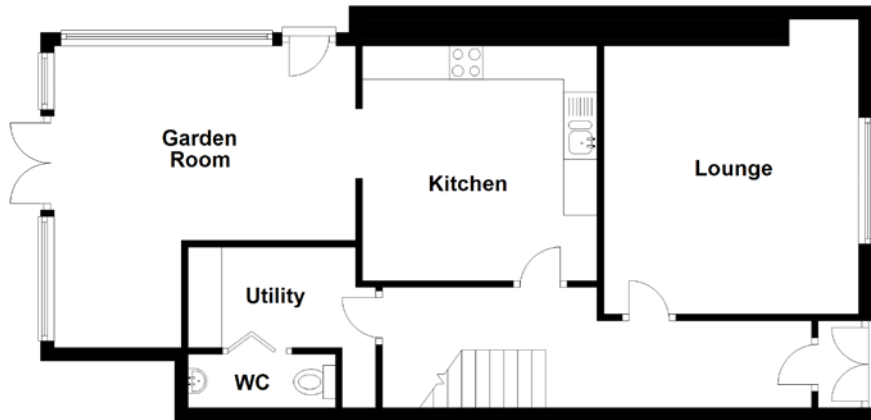


FLOOR PLAN, DIMENSIONS & MAP



Approximate Dimensions (Taken from the widest point)

Lounge	4.00m (13'1") x 3.80m (12'6")
Kitchen	3.50m (11'6") x 3.50m (11'6")
Garden Room	4.50m (14'9") x 4.50m (14'9")
Utility	3.20m (10'6") x 1.50m (4'11")
WC	2.20m (7'3") x 0.80m (2'7")

Bathroom	2.20m (7'3") x 2.00m (6'7")
Bedroom 1	3.90m (12'9") x 3.50m (11'6")
Bedroom 2	3.50m (11'6") x 3.50m (11'6")
Bedroom 3	5.40m (17'9") x 4.40m (14'5")

Gross internal floor area (m²): 107m²
EPC Rating: D

