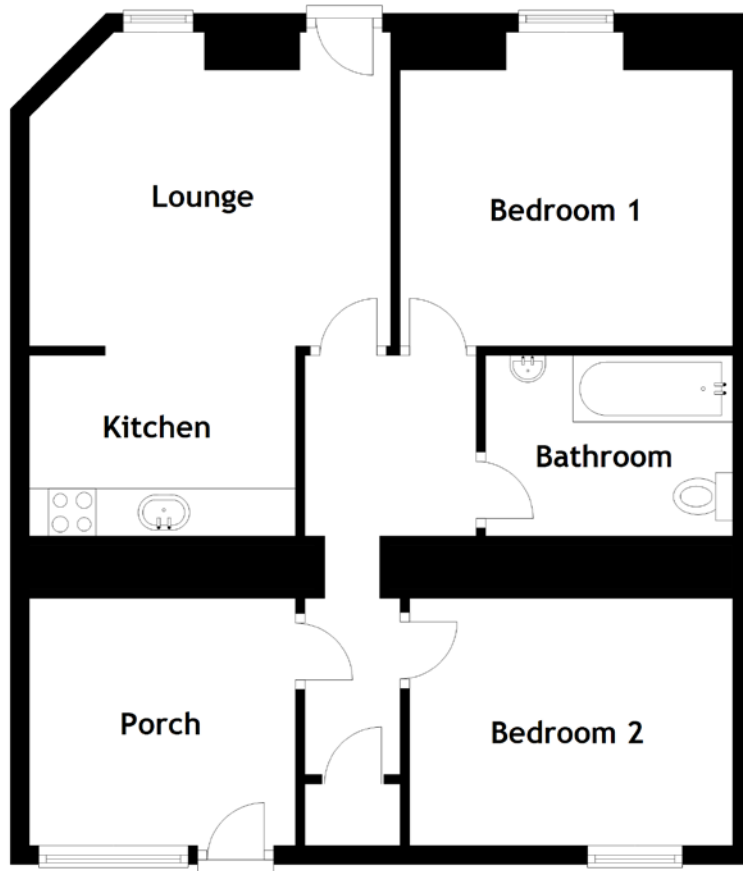


FLOOR PLAN, DIMENSIONS & MAP



Approximate Dimensions
(Taken from the widest point)

Lounge 3.80m (12'6") x 3.30m (10'10")
Kitchen 2.80m (9'2") x 1.40m (4'7")
Bedroom 1 3.50m (11'6") x 3.30m (10'10")

Bedroom 2 3.40m (11'2") x 2.60m (8'6")
Bathroom 2.60m (8'6") x 1.90m (6'3")
Porch 2.70m (8'10") x 2.70m (8'10")

Gross internal floor area (m²): 48m²
EPC Rating: E

