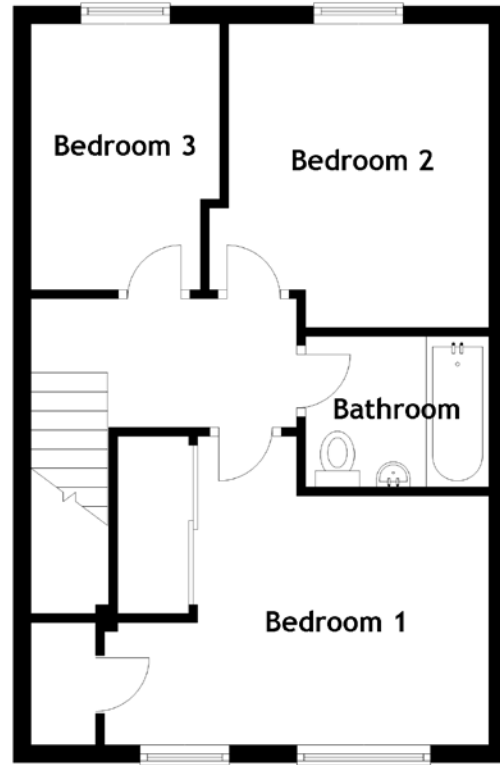
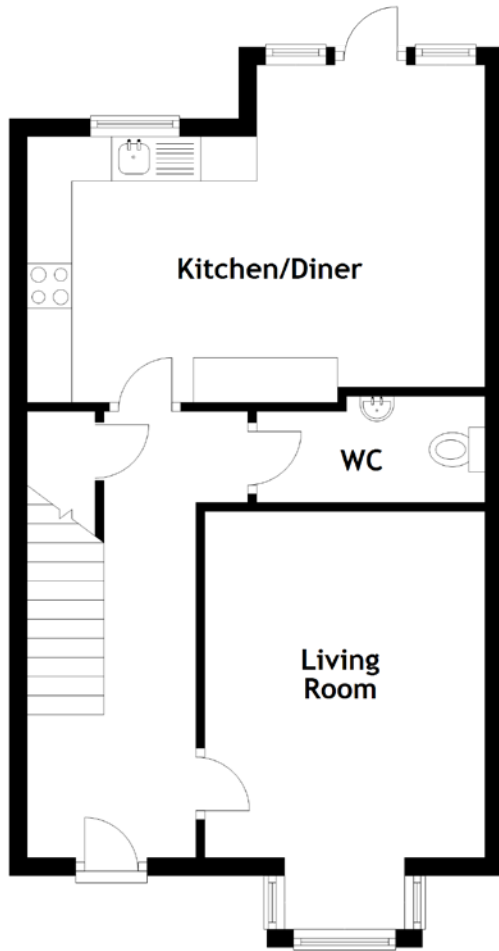


FLOOR PLAN, DIMENSIONS & MAP



Approximate Dimensions
(Taken from the widest point)

Living Room 4.68m (15'4") x 3.14m (10'4")
Kitchen/Diner 5.13m (16'10") x 3.78m (12'5")
WC 2.56m (8'5") x 1.19m (3'11")

Bathroom 2.05m (6'9") x 1.69m (5'6")
Bedroom 1 4.31m (14'2") x 3.46m (11'4")
Bedroom 2 3.35m (11') x 3.33m (10'11")
Bedroom 3 2.96m (9'9") x 2.05m (6'9")

Gross internal floor area (m²): 85m² | EPC Rating: C

[VIRTUAL TOUR - CLICK HERE](#)

