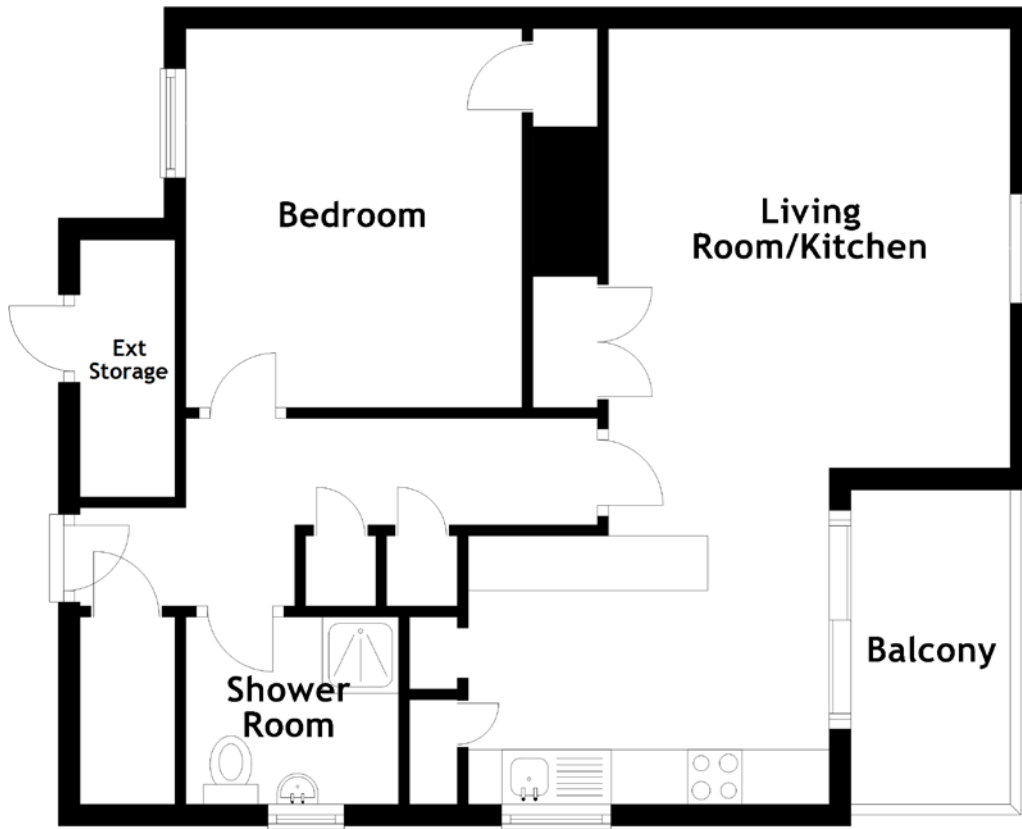


FLOOR PLAN, DIMENSIONS & MAP



Approximate Dimensions (Taken from the widest point)

Living Room/Kitchen 7.10m (23'4") x 4.96m (16'3")
 Balcony 2.98m (9'9") x 1.56m (5'1")
 Bedroom 3.40m (11'2") x 3.08m (10'1")

Ext Storage 2.35m (7'9") x 0.87m (2'10")
 Shower Room 1.95m (6'5") x 1.71m (5'7")

Gross internal floor area (m²): 40m²
 EPC Rating: F

[VIRTUAL TOUR](#)

