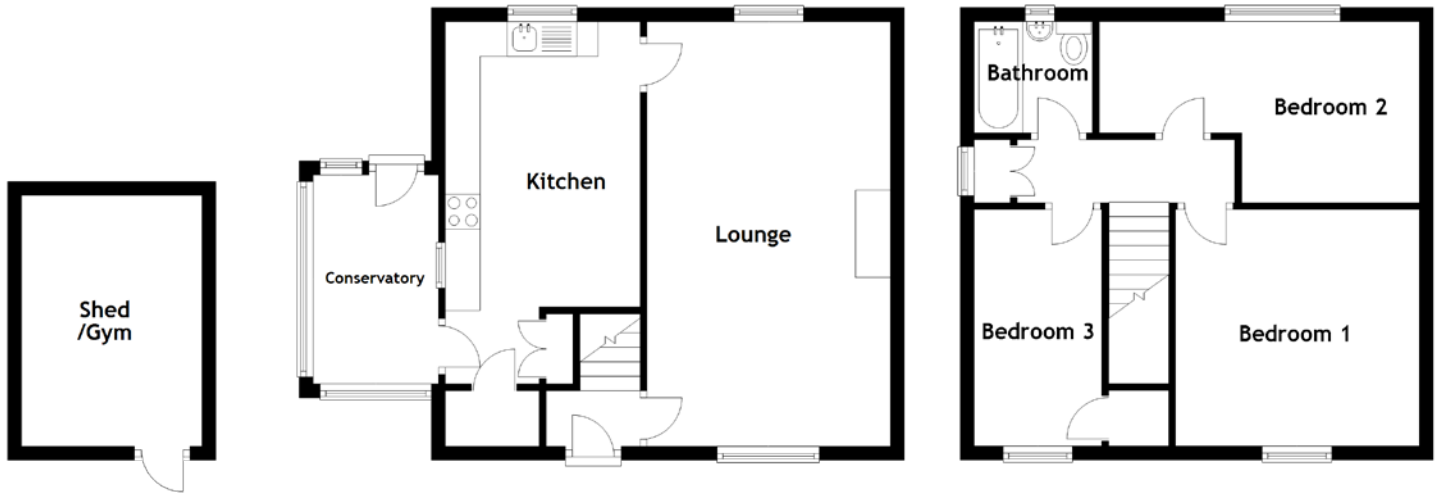


FLOOR PLAN, DIMENSIONS & MAP



Approximate Dimensions
(Taken from the widest point)

Lounge 6.10m (20') x 3.50m (11'6")
 Kitchen 4.10m (13'5") x 2.80m (9'2")
 Conservatory 3.00m (9'10") x 1.80m (5'11")
 Bathroom 1.80m (5'11") x 1.60m (5'3")

Bedroom 1 3.60m (11'10") x 3.40m (11'2")
 Bedroom 2 4.60m (15'1") x 2.60m (8'6")
 Bedroom 3 3.50m (11'6") x 1.80m (5'11")
 Shed/Gym 3.60m (11'10") x 2.60m (8'6")

Gross internal floor area (m²): 84m²
 EPC Rating: D

