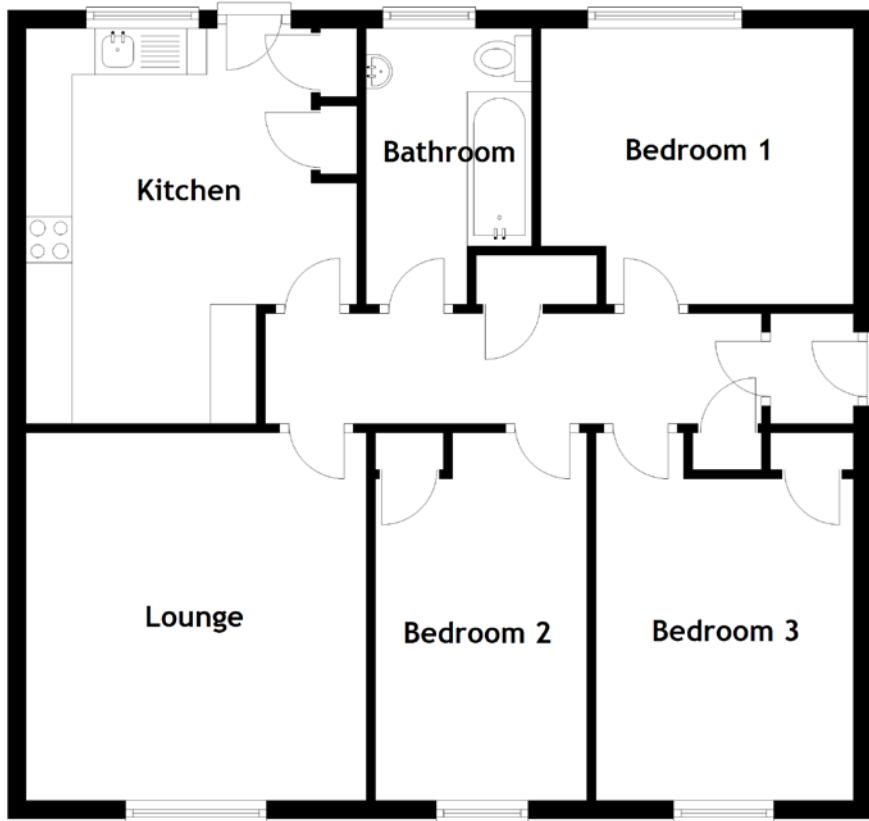


FLOOR PLAN, DIMENSIONS & MAP



Approximate Dimensions
(Taken from the widest point)

Lounge 4.00m (13'1") x 3.70m (12'2")
 Kitchen 4.30m (14'1") x 3.60m (11'10")
 Bedroom 1 3.40m (11'2") x 3.00m (9'10")

Bedroom 2 4.00m (13'1") x 2.30m (7'7")
 Bedroom 3 4.00m (13'1") x 2.80m (9'2")
 Bathroom 3.00m (9'10") x 1.80m (5'11")

Gross internal floor area (m²): 77m²
 EPC Rating: D

