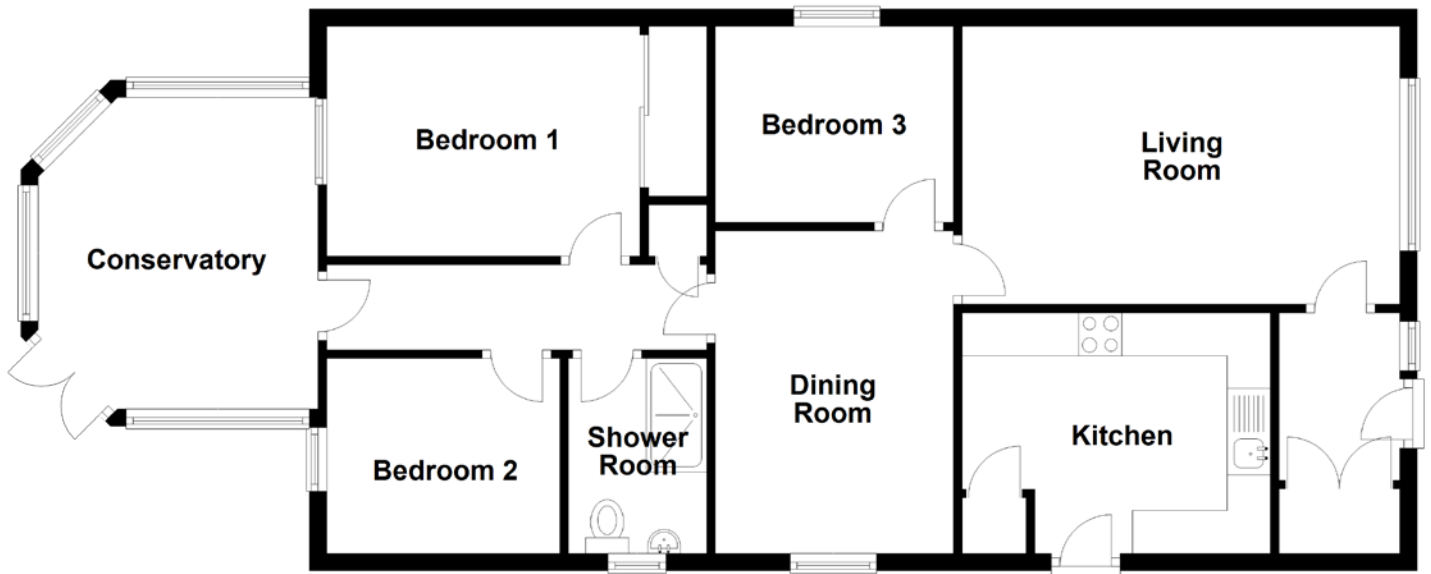


# FLOOR PLAN, DIMENSIONS & MAP



Approximate Dimensions  
(Taken from the widest point)

Living Room 5.07m (16'8") x 3.22m (10'7")  
 Kitchen 3.47m (11'5") x 2.79m (9'2")  
 Dining Room 3.67m (12') x 2.76m (9'1")  
 Shower Room 2.26m (7'5") x 1.60m (5'3")

Bedroom 1 3.63m (11'11") x 2.66m (8'9")  
 Bedroom 2 2.70m (8'10") x 2.26m (7'5")  
 Bedroom 3 2.76m (9'1") x 2.27m (7'5")  
 Conservatory 3.61m (11'10") x 3.24m (10'8")

Gross internal floor area (m<sup>2</sup>): 82m<sup>2</sup>  
 EPC Rating: C

