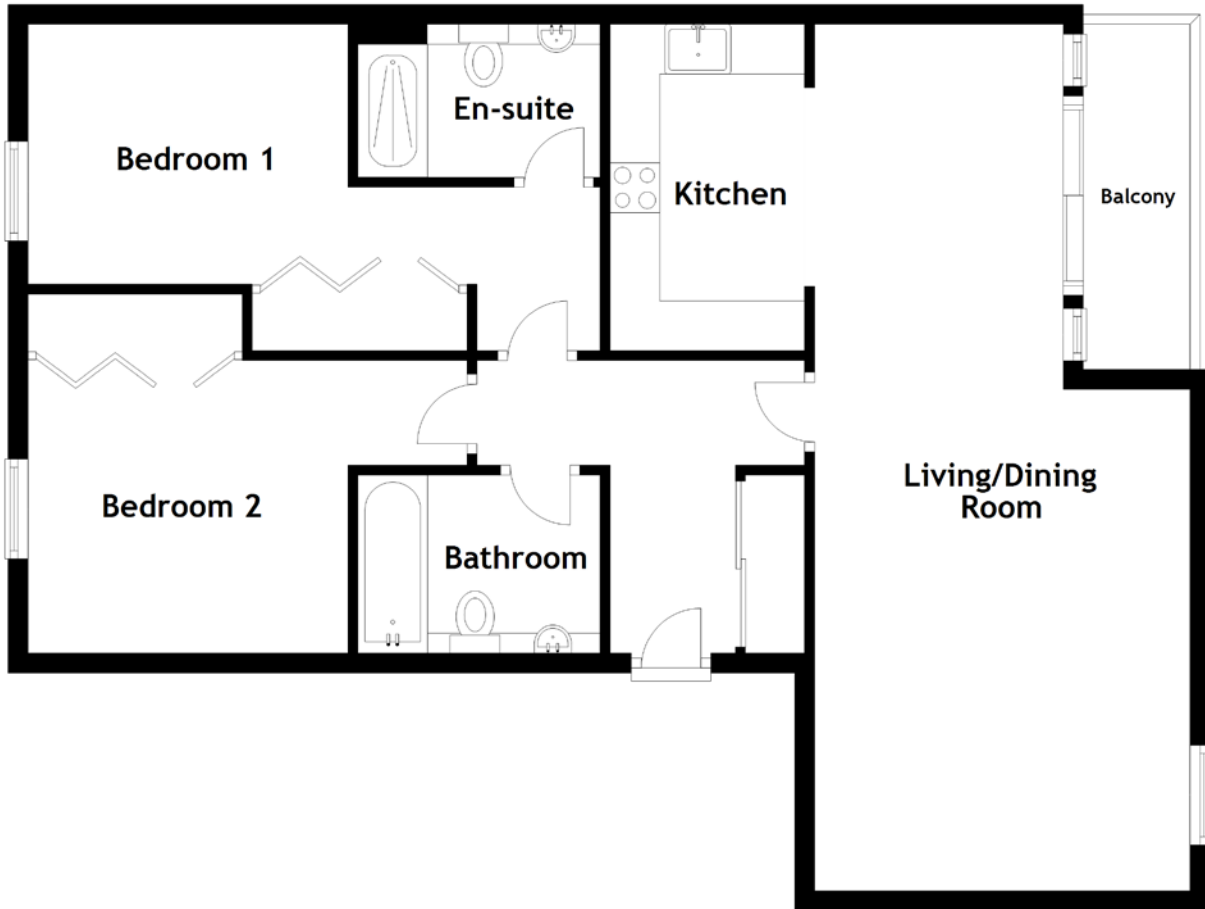


FLOOR PLAN, DIMENSIONS & MAP



Approximate Dimensions (Taken from the widest point)

Living/Dining Room 8.71m (28'7") x 3.78m (12'5")
 Kitchen 3.28m (10'9") x 1.96m (6'5")
 Balcony 3.47m (11'5") x 1.08m (3'6")
 Bedroom 1 5.76m (18'11") x 2.61m (8'7")

En-suite 2.44m (8') x 1.54m (5'1")
 Bedroom 2 4.42m (14'6") x 2.94m (9'8")
 Bathroom 2.44m (8') x 1.79m (5'10")

Gross internal floor area (m²): 84m²
 EPC Rating: B

