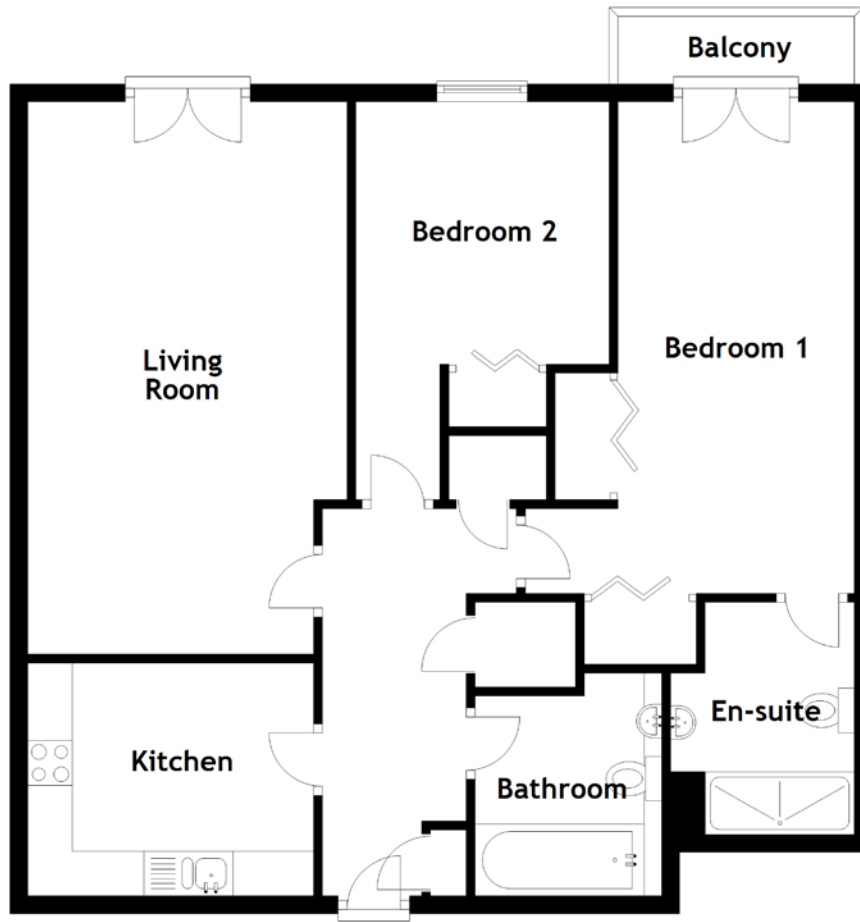


FLOOR PLAN, DIMENSIONS & MAP



Approximate Dimensions
(Taken from the widest point)

Living Room 6.19m (20'4") x 3.58m (11'9")
 Kitchen 3.21m (10'6") x 2.61m (8'7")
 Bedroom 1 5.51m (18'1") x 3.69m (12'1")

En-suite 2.60m (8'6") x 2.06m (6'9")
 Bedroom 2 4.46m (14'8") x 2.84m (9'4")
 Bathroom 2.50m (8'2") x 2.09m (6'10")

Gross internal floor area (m²): 82m²
 EPC Rating: B

