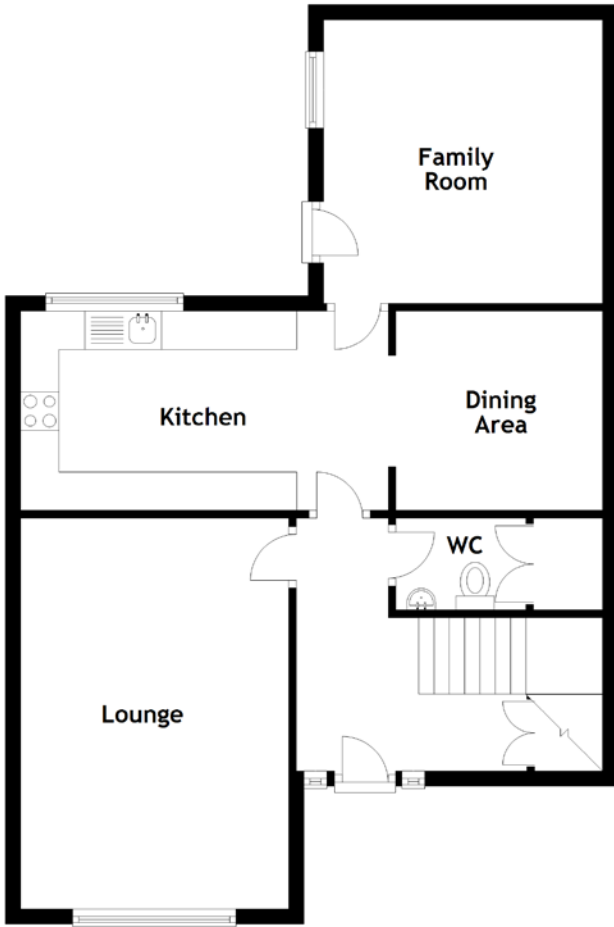


FLOOR PLAN, DIMENSIONS & MAP



Approximate Dimensions (Taken from the widest point)

Lounge	5.10m (16'9") x 3.50m (11'6")
Kitchen	4.80m (15'9") x 2.60m (8'6")
Dining Area	2.70m (8'10") x 2.60m (8'6")
Family Room	3.70m (12'2") x 3.45m (11'4")
WC	1.70m (5'7") x 1.20m (3'11")
Bathroom	2.50m (8'2") x 2.11m (6'11")

Bedroom 1	3.65m (12') x 3.50m (11'6")
Bedroom 2	3.95m (13') x 2.70m (8'10")
Bedroom 3	4.05m (13'4") x 2.75m (9')

Gross internal floor area (m²): 104m²
EPC Rating: C

Buyer's Premium Value: £2400.00

