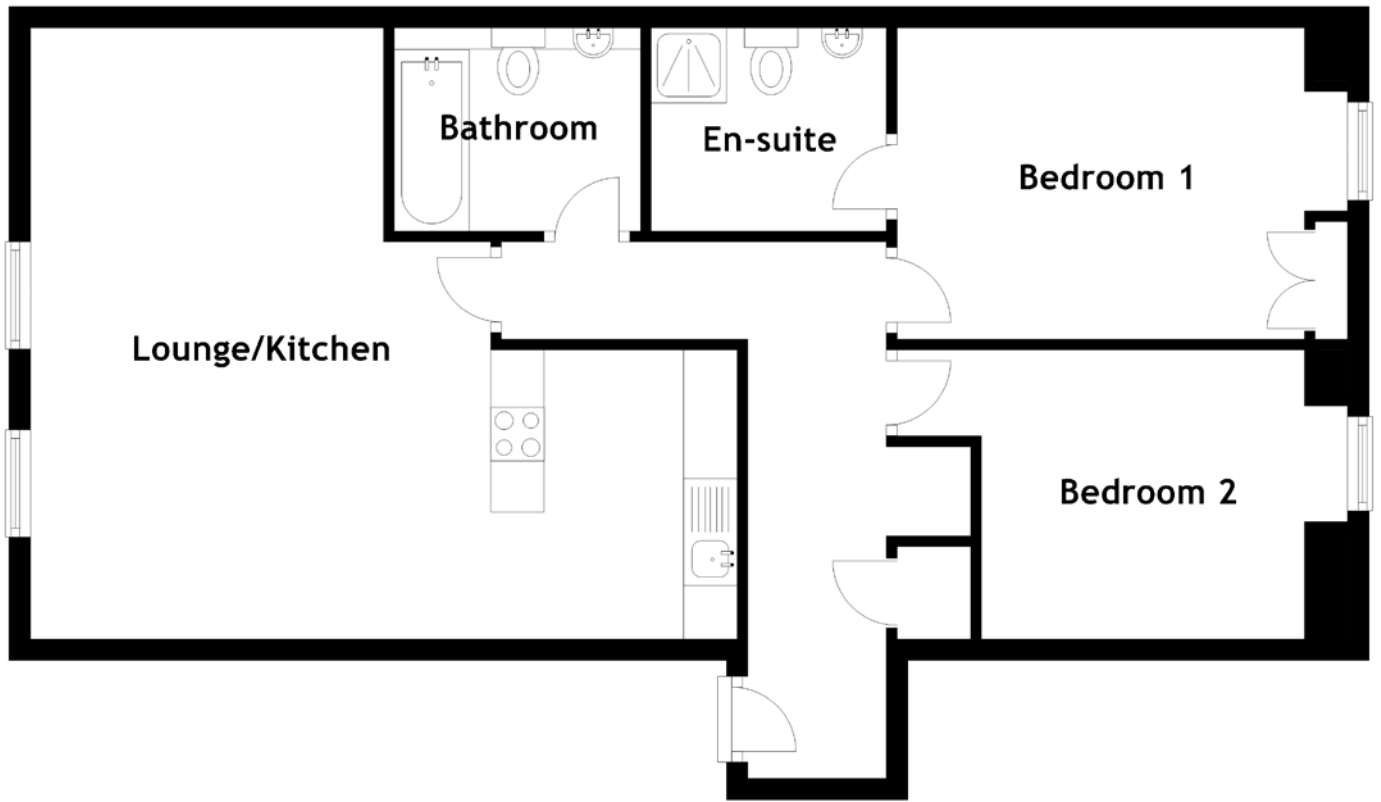


FLOOR PLAN, DIMENSIONS & MAP



Approximate Dimensions (Taken from the widest point)

Lounge/Kitchen 6.60m (21'8") x 5.70m (18'8")
 Bathroom 2.30m (7'7") x 1.90m (6'3")
 Bedroom 1 3.80m (12'6") x 2.90m (9'6")

En-suite
 Bedroom 2

2.20m (7'2") x 1.90m (6'3")
 4.20m (13'9") x 2.70m (8'10")

Gross internal floor area (m²): 72m²
 EPC Rating: D

