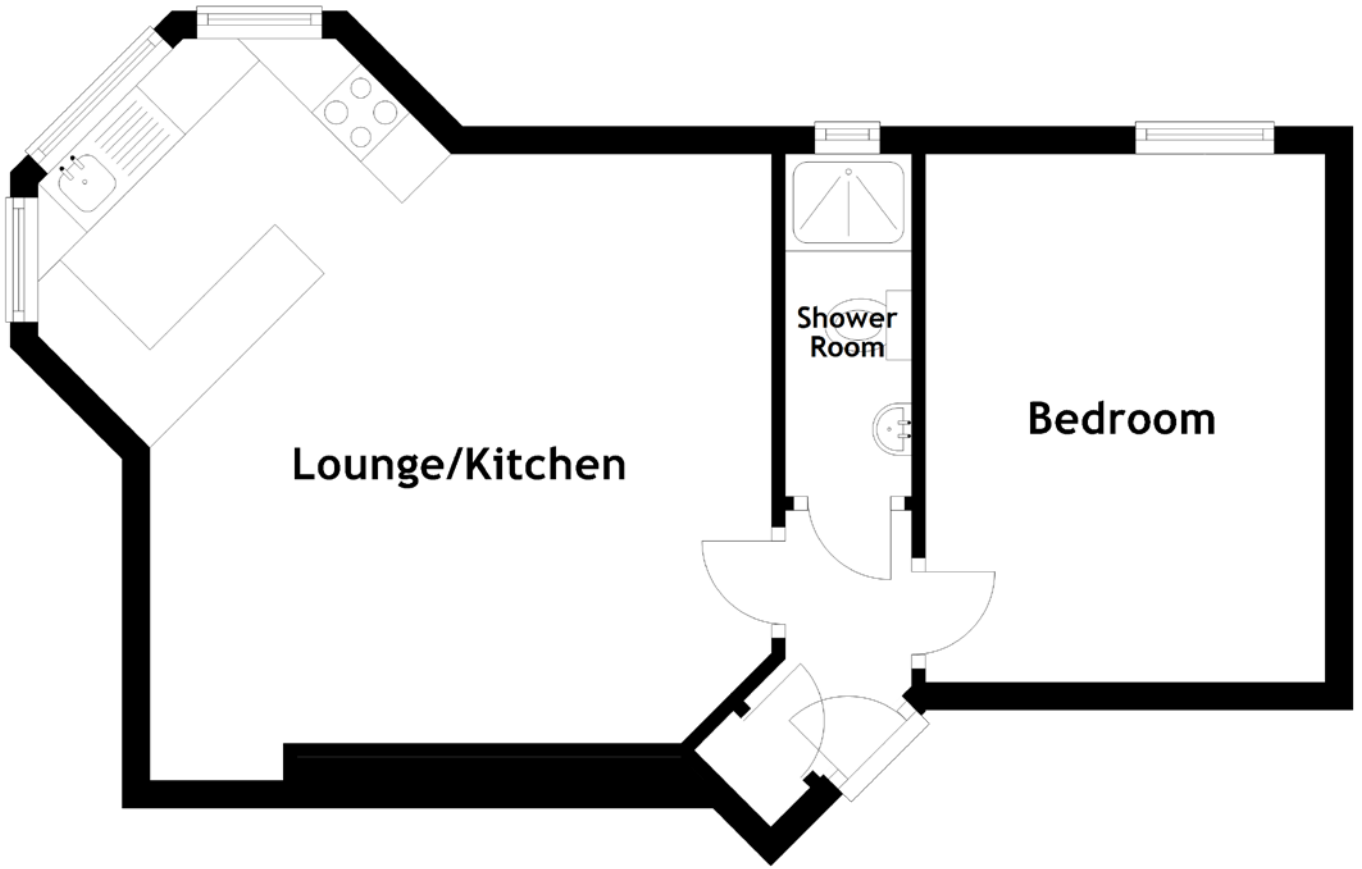


FLOOR PLAN, DIMENSIONS & MAP



Approximate Dimensions (Taken from the widest point)

Lounge/Kitchen 5.30m (17'5") x 5.10m (16'9")
Bedroom 3.81m (12'6") x 2.88m (9'5")
Shower Room 2.47m (8'1") x 0.91m (3')

Gross internal floor area (m²): 39m²

EPC Rating: G

