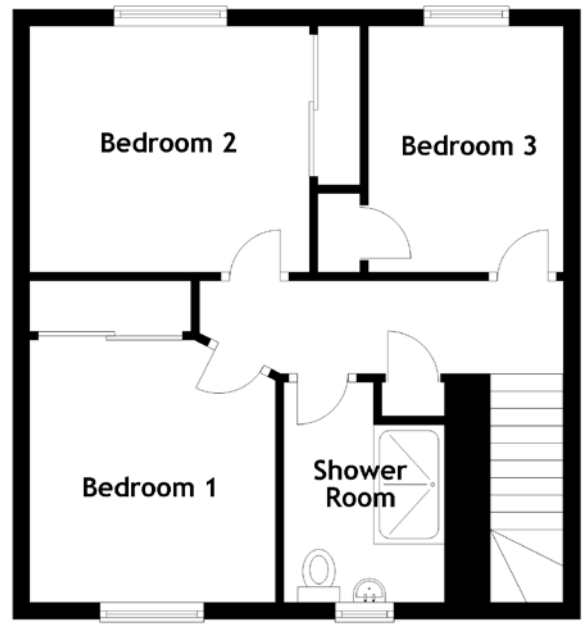
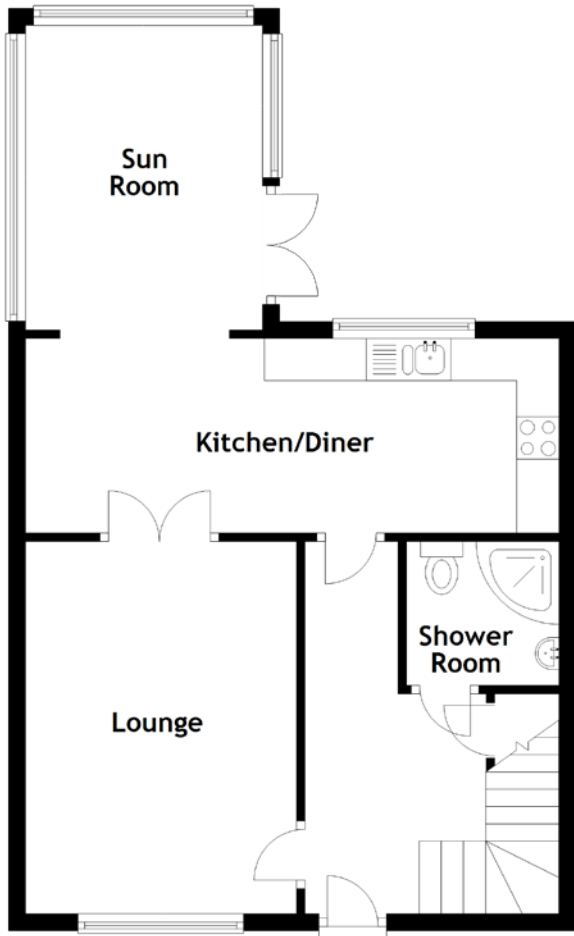


# FLOOR PLAN, DIMENSIONS & MAP



Approximate Dimensions  
(Taken from the widest point)

Lounge	4.40m (14'5") x 3.20m (10'6")
Kitchen/Diner	6.30m (20'8") x 2.30m (7'7")
Sunroom	3.60m (11'10") x 2.80m (9'2")
Lower Shower Room	1.80m (5'11") x 1.70m (5'7")

Bedroom 1	3.10m (10'2") x 2.90m (9'6")
Bedroom 2	3.30m (10'10") x 2.90m (9'6")
Bedroom 3	2.90m (9'6") x 2.30m (7'7")
Upper Shower Room	2.60m (8'6") x 1.90m (6'3")

Gross internal floor area (m<sup>2</sup>): 98m<sup>2</sup>  
EPC Rating: C

