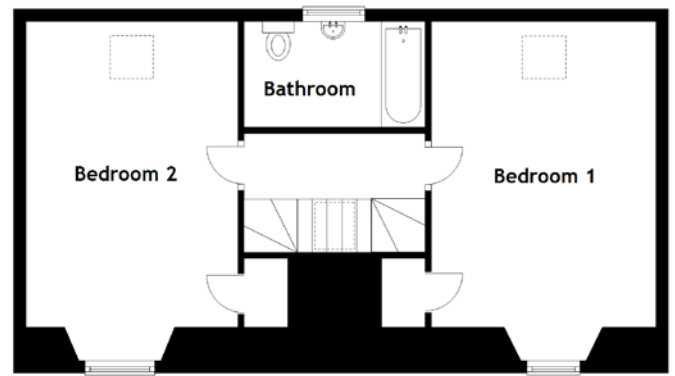


FLOOR PLAN, DIMENSIONS & MAP



Approximate Dimensions (Taken from the widest point)

Lounge	5.50m (18'1") x 4.90m (16'1")
Kitchen	5.10m (16'9") x 4.40m (14'5")
Shower Room	2.20m (7'3") x 1.40m (4'7")
Bedroom 3	3.40m (11'2") x 3.00m (9'10")
Bedroom 4	3.40m (11'2") x 1.80m (5'11")
Bathroom	2.90m (9'6") x 1.70m (5'7")

Bedroom 1	4.90m (16'1") x 3.60m (11'10")
Bedroom 2	4.90m (16'1") x 3.40m (11'2")

Gross internal floor area (m²): 132m²
EPC Rating: D

Extras: All floor coverings, blinds, curtains, and light fittings are included in the sale.

