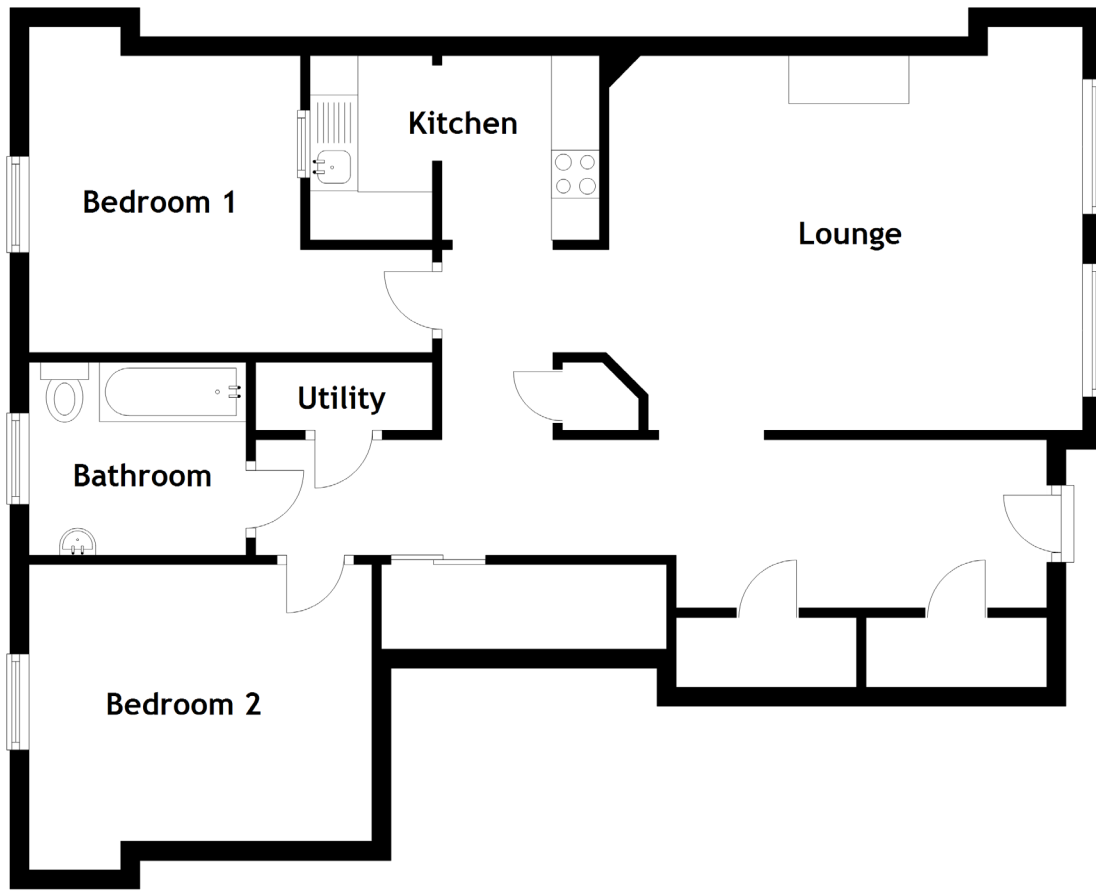


FLOOR PLAN, DIMENSIONS & MAP



Approximate Dimensions
(Taken from the widest point)

Lounge 4.93m (16'2") x 3.90m (12'10")
 Kitchen 3.00m (9'10") x 1.92m (6'4")
 Utility 1.90m (6'3") x 0.71m (2'4")

Bathroom 2.26m (7'5") x 2.01m (6'7")
 Bedroom 1 4.20m (13'9") x 3.09m (10'2")
 Bedroom 2 3.57m (11'9") x 2.88m (9'5")

Gross internal floor area (m²): 78m²
 EPC Rating: C

