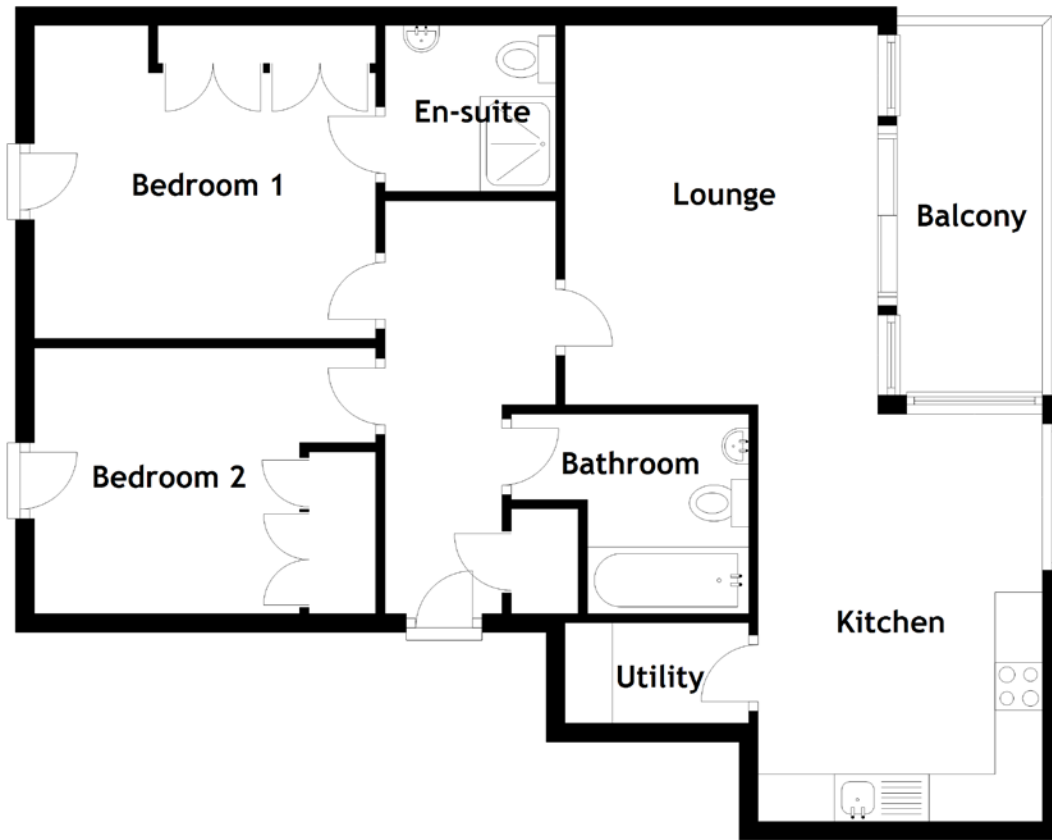


FLOOR PLAN, DIMENSIONS & MAP



Approximate Dimensions (Taken from the widest point)

Lounge/Kitchen 8.40m (27'7") x 5.00m (16'5")
 Balcony 3.90m (12'9") x 1.54m (5')
 Utility 1.90m (6'3") x 1.05m (3'6")
 Bedroom 1 3.60m (11'10") x 3.30m (10'10")

En-suite 1.80m (5'11") x 1.75m (5'9")
 Bedroom 2 3.60m (11'10") x 2.80m (9'2")
 Bathroom 2.10m (6'11") x 1.70m (5'7")

Gross internal floor area (m²): 68m²
 EPC Rating: C

