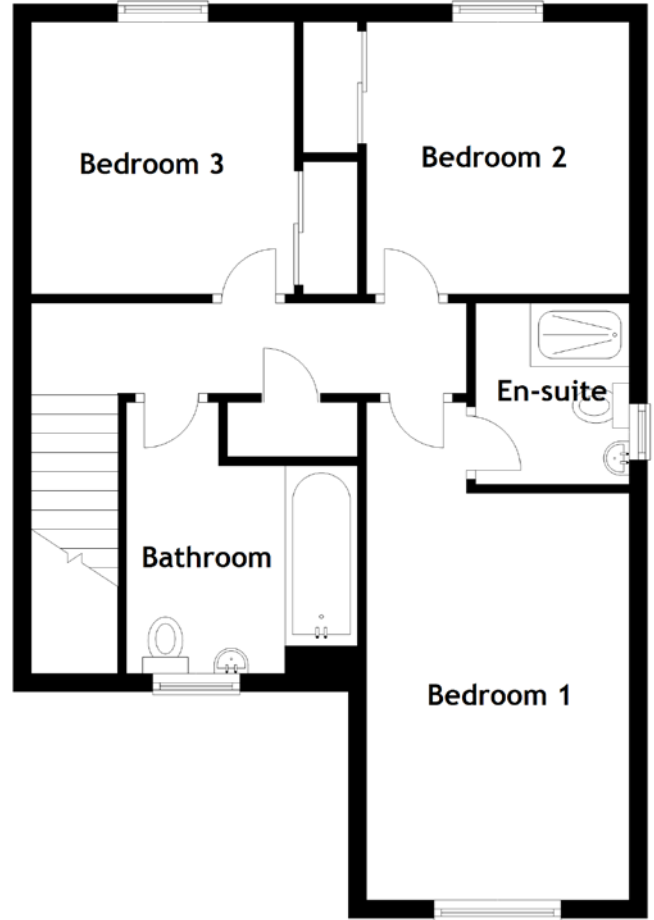
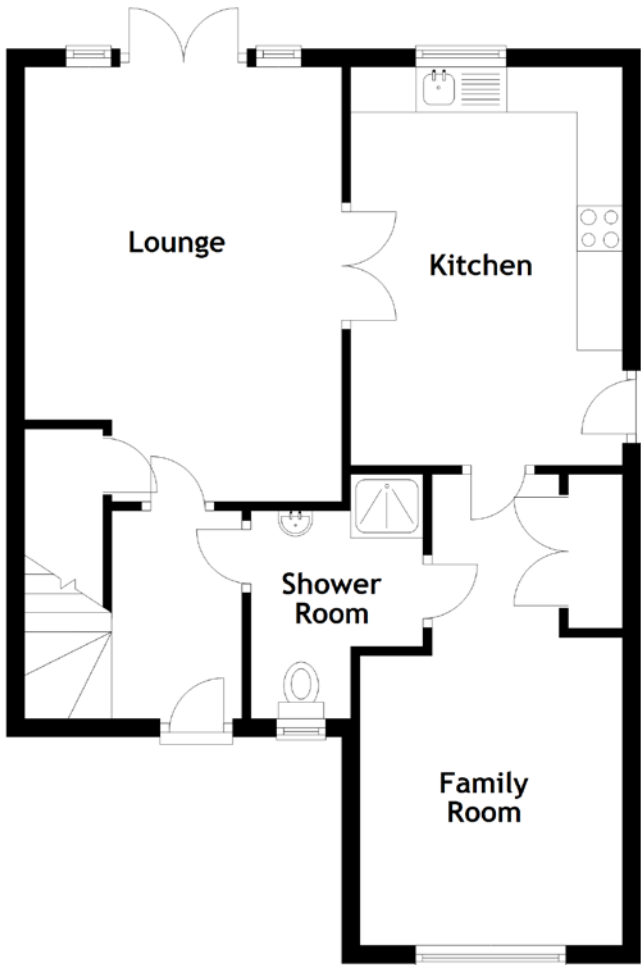


FLOOR PLAN, DIMENSIONS & MAP



Approximate Dimensions (Taken from the widest point)

Lounge	4.80m (15'9") max x 3.50m (11'6")
Kitchen	4.40m (14'5") x 3.00m (9'10")
Family Room	5.20m (17'1") x 2.90m (9'6")
Shower Room	2.30m (7'6") x 1.90m (6'3")
Bedroom 1	5.50m (18') x 3.00m (9'10")

En-suite	2.00m (6'7") x 1.70m (5'7")
Bedroom 2	3.00m (9'10") x 2.90m (9'6")
Bedroom 3	3.00m (9'10") x 2.90m (9'6")
Bathroom	3.00m (9'10") x 2.40m (7'10")

Gross internal floor area (m²): 115m²
EPC Rating: C

