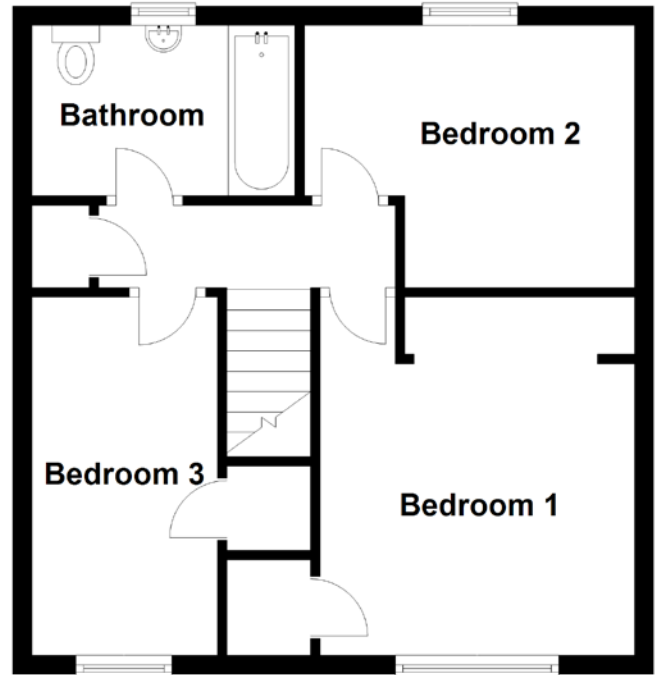
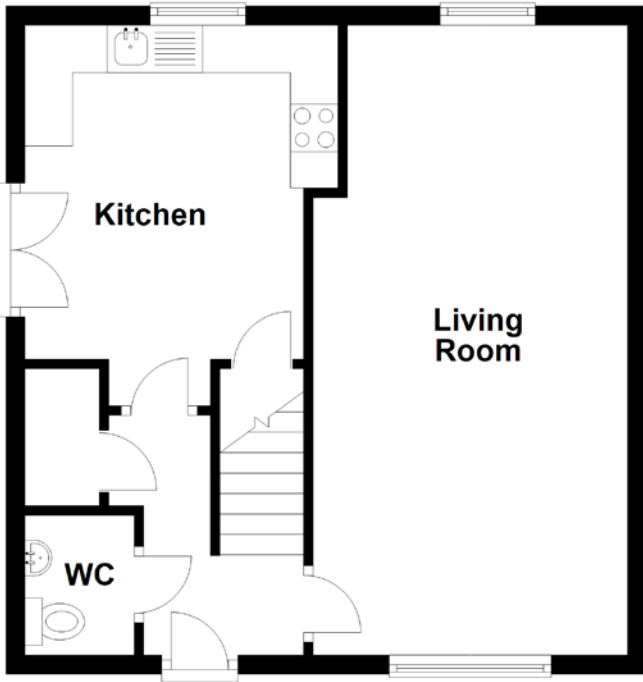


FLOOR PLAN, DIMENSIONS & MAP



Approximate Dimensions (Taken from the widest point)

Living Room	6.61m (21'8") x 3.30m (10'10")
Kitchen	3.50m (11'6") x 2.92m (9'7")
WC	1.47m (4'10") x 1.15m (3'9")
Bathroom	2.76m (9'1") x 1.79m (5'10")
Bedroom 1	3.76m (12'4") x 3.34m (10'11")

Bedroom 2	3.46m (11'4") x 2.75m (9')
Bedroom 3	3.76m (12'4") x 1.98m (6'6")

Gross internal floor area (m²): 85m² | EPC Rating: D

Extras: Floor coverings, light fittings and appliances are included in the sale.

