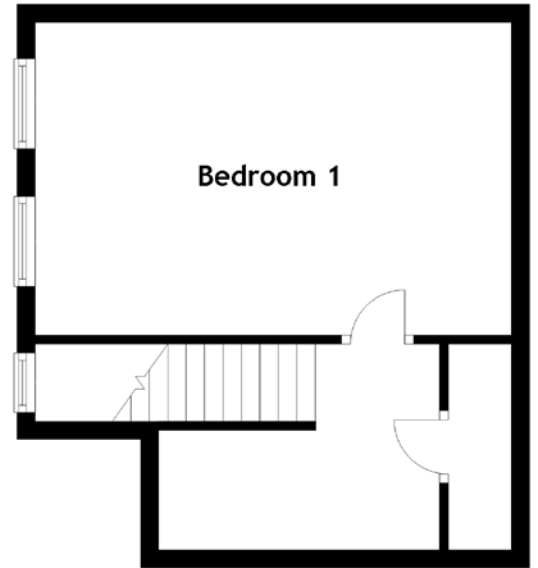
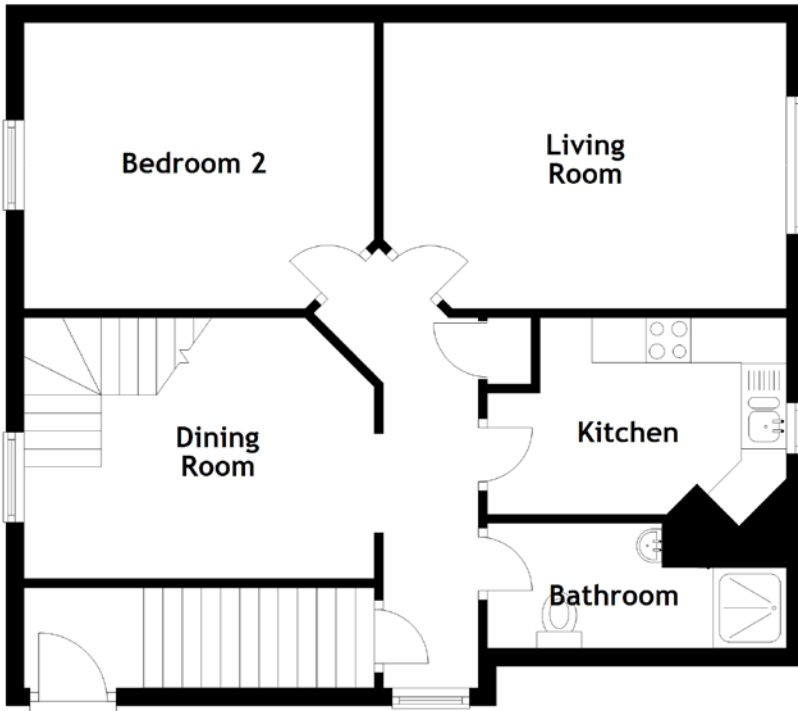


FLOOR PLAN, DIMENSIONS & MAP



Approximate Dimensions
(Taken from the widest point)

Living Room 4.49m (14'9") x 3.18m (10'5")
 Kitchen 3.33m (10'11") x 2.68m (8'10")
 Dining Room 3.90m (12'10") x 2.90m (9'6")

Bathroom 3.03m (9'11") x 1.39m (4'7")
 Bedroom 1 5.30m (17'5") x 3.48m (11'5")
 Bedroom 2 3.90m (12'10") x 3.18m (10'5")

Gross internal floor area (m²): 90m²
 EPC Rating: E

