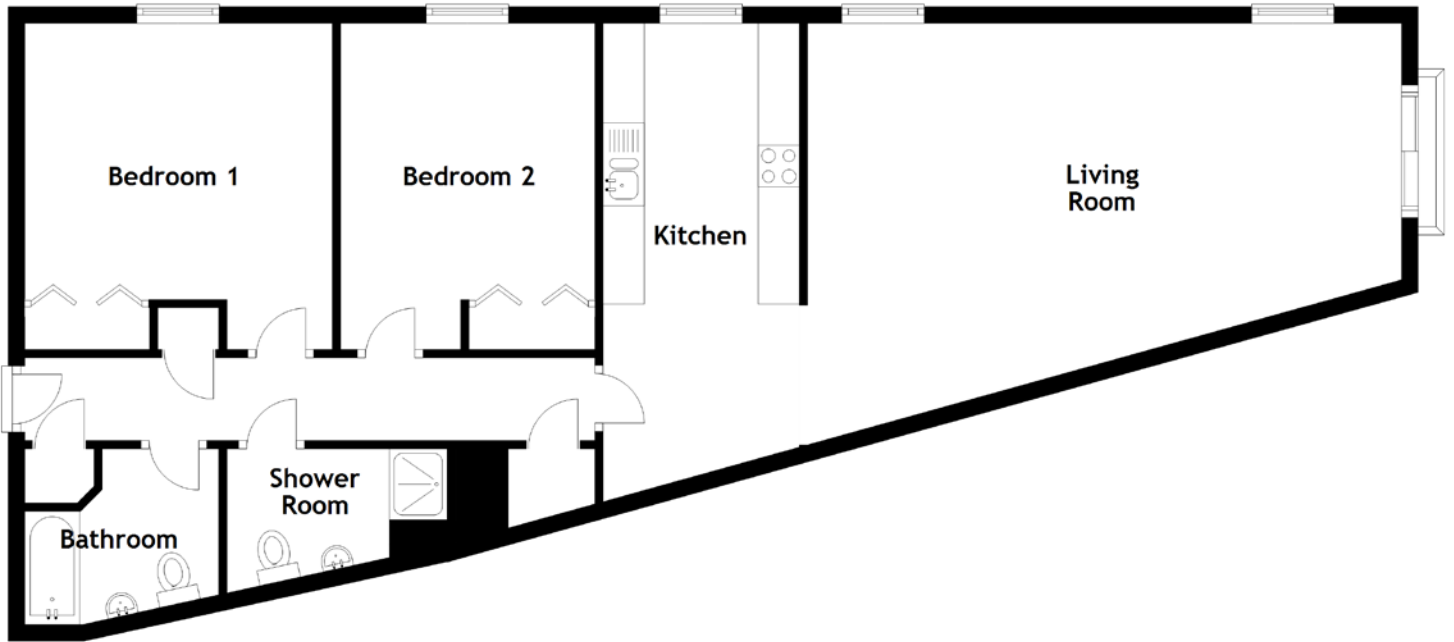


FLOOR PLAN, DIMENSIONS & MAP



Approximate Dimensions
(Taken from the widest point)

Living Room 7.20m (23'7") x 5.12m (16'10")
 Kitchen 5.88m (19'3") x 2.38m (7'10")
 Shower Room 2.67m (8'9") x 1.90m (6'3")

Bathroom 2.35m (7'9") x 2.13m (7')
 Bedroom 1 3.95m (13') x 3.73m (12'3")
 Bedroom 2 3.95m (13') x 3.08m (10'1")

Gross internal floor area (m²): 90m²
 EPC Rating: C

