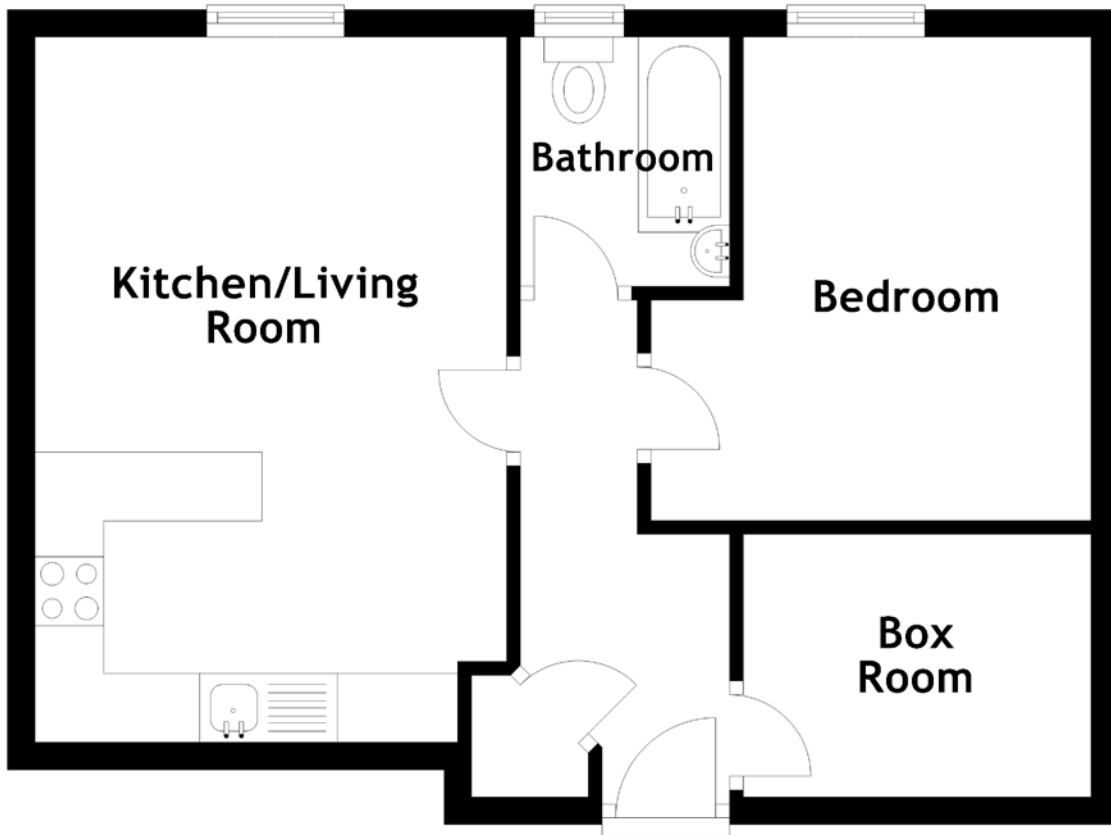


FLOOR PLAN, DIMENSIONS & MAP



Approximate Dimensions
(Taken from the widest point)

Kitchen/Living Room 5.12m (16'10") x 3.43m (11'3")
Bathroom 1.81m (5'11") x 1.52m (5')

Bedroom
Box Room

3.51m (11'6") x 2.00m (6'7")
2.53m (8'4") x 1.91m (6'3")

Gross internal floor area (m²): 47m²
EPC Rating: D

