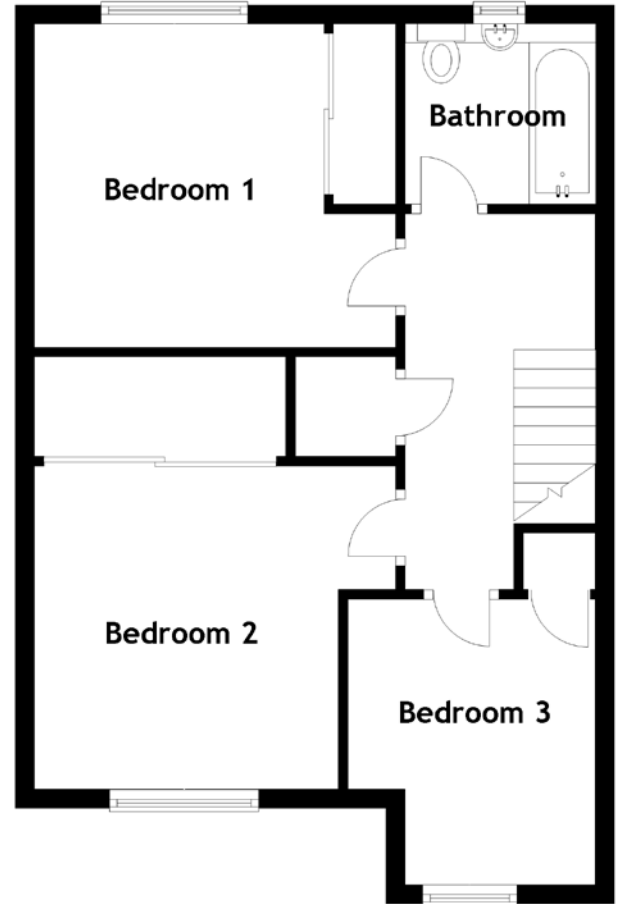
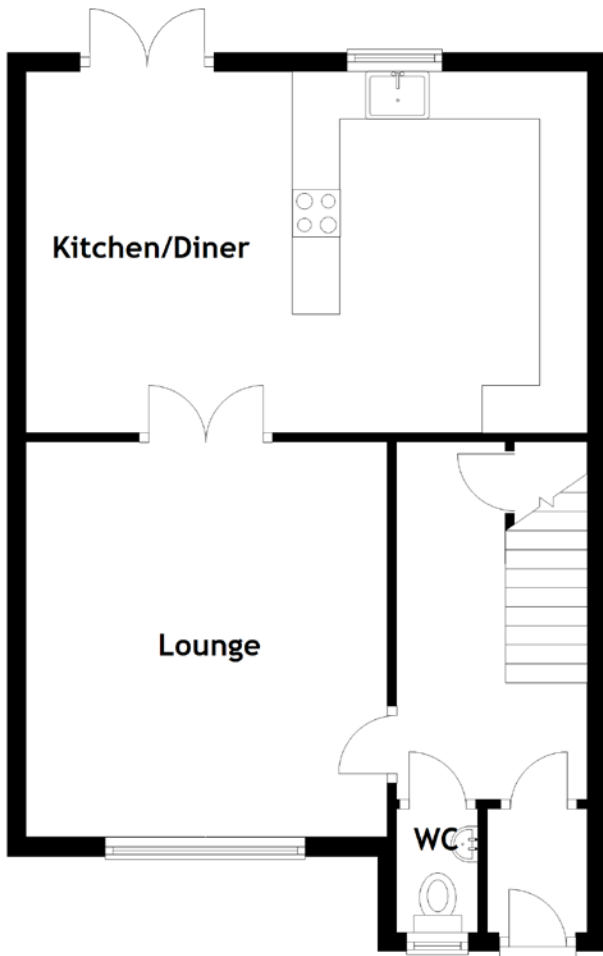


FLOOR PLAN, DIMENSIONS & MAP



Approximate Dimensions
(Taken from the widest point)

| | |
|---------------|-------------------------------|
| Lounge | 4.15m (13'7") x 3.80m (12'6") |
| Kitchen/Diner | 5.90m (19'4") x 3.80m (12'6") |
| WC | 1.30m (4'3") x 0.85m (2'9") |
| Bathroom | 2.00m (6'7") x 1.90m (6'3") |
| Bedroom 1 | 3.80m (12'6") x 3.40m (11'2") |

| | |
|-----------|-------------------------------|
| Bedroom 2 | 3.80m (12'6") x 3.40m (11'2") |
| Bedroom 3 | 3.00m (9'10") x 2.60m (8'6") |

Gross internal floor area (m²): 96m²
EPC Rating: C

Extras: Floor coverings, light fittings, blinds, window dressings and integrated appliances.

