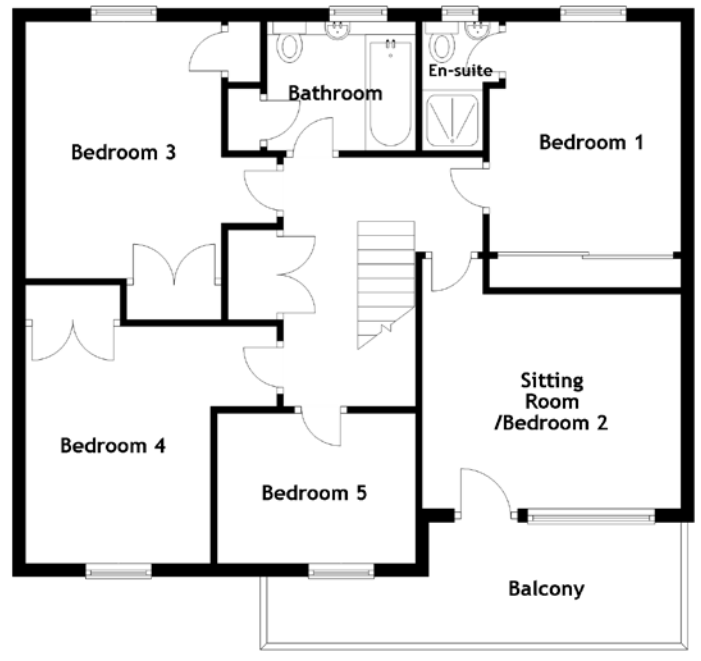
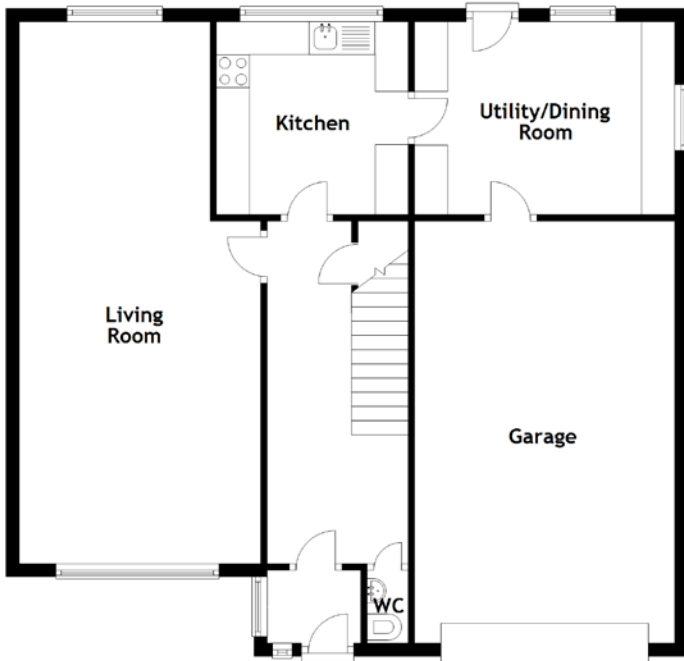


FLOOR PLAN, DIMENSIONS & MAP



Approximate Dimensions (Taken from the widest point)

Living Room	8.23m (27') x 3.67m (12')
Kitchen	2.93m (9'7") x 2.91m (9'7")
Utility/Dining Room	3.95m (13') x 2.93m (9'7")
WC	1.20m (3'11") x 0.62m (2')
Bathroom	2.26m (7'5") x 1.96m (6'5")
Bedroom 1	3.50m (11'6") x 2.91m (9'7")
En-suite	1.96m (6'5") x 1.17m (3'10")

Sitting Room/Bedroom 2	3.94m (12'11") x 3.80m (12'6")
Bedroom 3	3.90m (12'10") x 3.82m (12'6")
Bedroom 4	3.82m (12'6") x 3.60m (11'10")
Bedroom 5	3.01m (9'11") x 2.28m (7'6")
Balcony	6.29m (20'8") x 1.94m (6'4")
Garage	6.41m (21') x 3.95m (13')

Gross internal floor area (m²): 145m²
EPC Rating: E

