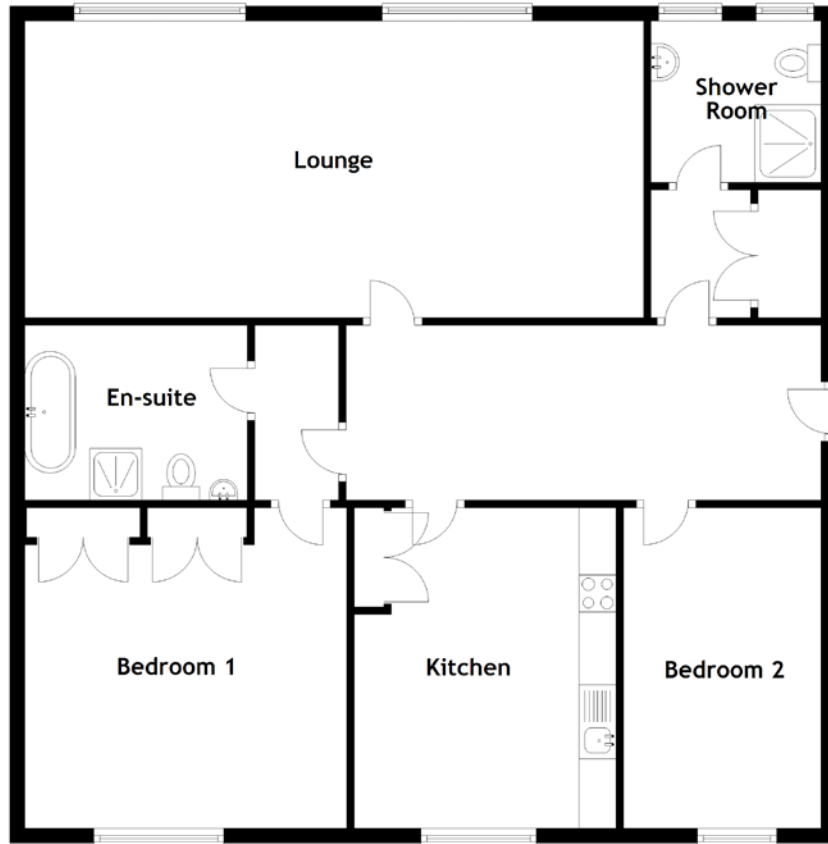


FLOOR PLAN, DIMENSIONS & MAP



Approximate Dimensions
(Taken from the widest point)

Lounge 8.30m (27'3") x 4.00m (13'1")
 Kitchen 4.50m (14'9") x 3.50m (11'6")
 Shower Room 2.30m (7'7") x 2.20m (7'3")

Bedroom 1 4.50m (14'9") x 4.50m (14'9")
 En-suite 2.90m (9'6") x 2.10m (6'11")
 Bedroom 2 4.50m (14'9") x 2.70m (8'10")

Gross internal floor area (m²): 136m²
 EPC Rating: C

