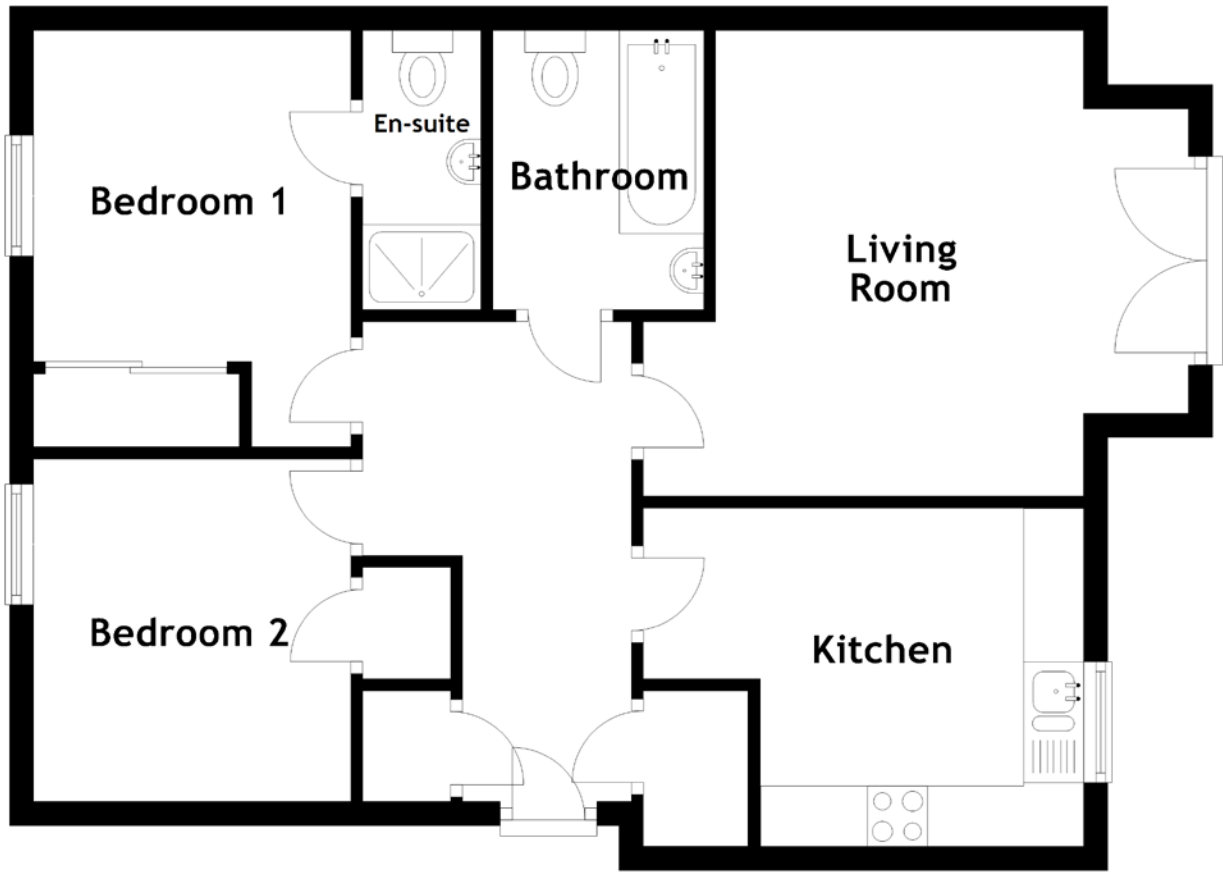


# FLOOR PLAN, DIMENSIONS & MAP



Approximate Dimensions  
(Taken from the widest point)

Living Room 4.52m (14'10") x 3.86m (12'8")  
 Kitchen 3.65m (12') x 2.80m (9'2")  
 Bathroom 2.31m (7'7") x 1.75m (5'9")

Bedroom 1 3.45m (11'4") x 2.63m (8'8")  
 En-suite 2.31m (7'7") x 0.98m (3'3")  
 Bedroom 2 2.84m (9'4") x 2.63m (8'8")

Gross internal floor area (m<sup>2</sup>): 61m<sup>2</sup>  
 EPC Rating: B

