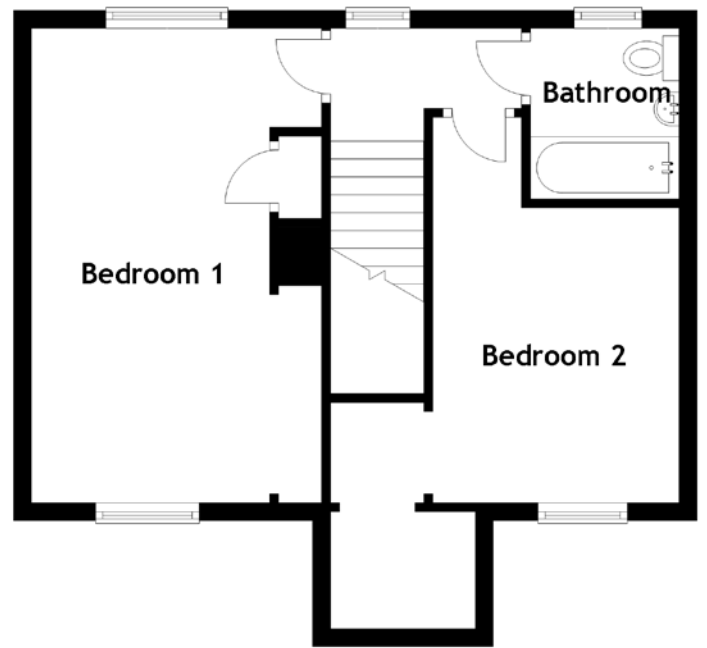
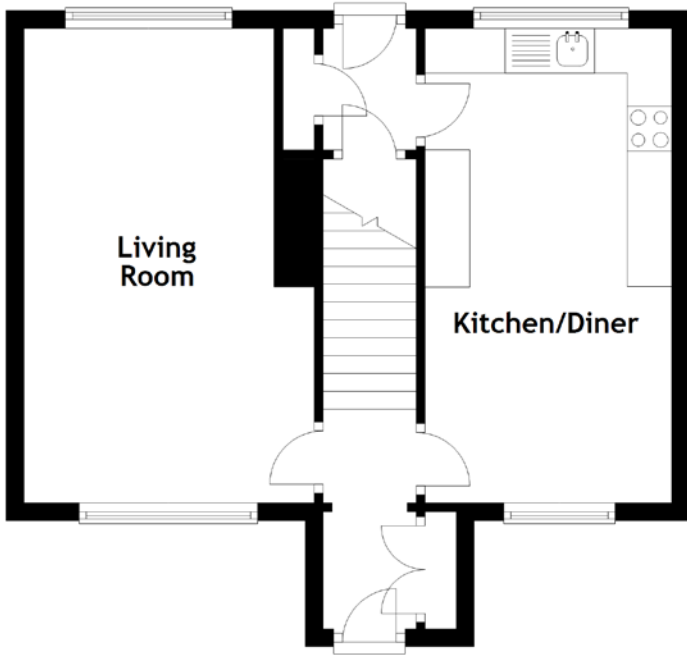


FLOOR PLAN, DIMENSIONS & MAP



Approximate Dimensions
(Taken from the widest point)

Living Room 5.31m (17'5") x 3.25m (10'8")
Kitchen/Diner 5.31m (17'5") x 2.76m (9'1")

Bathroom 1.91m (6'3") x 1.67m (5'6")
Bedroom 1 5.31m (17'5") x 3.25m (10'8")
Bedroom 2 4.31m (14'2") x 2.81m (9'3")

Gross internal floor area (m²): 83m² | EPC Rating: E

