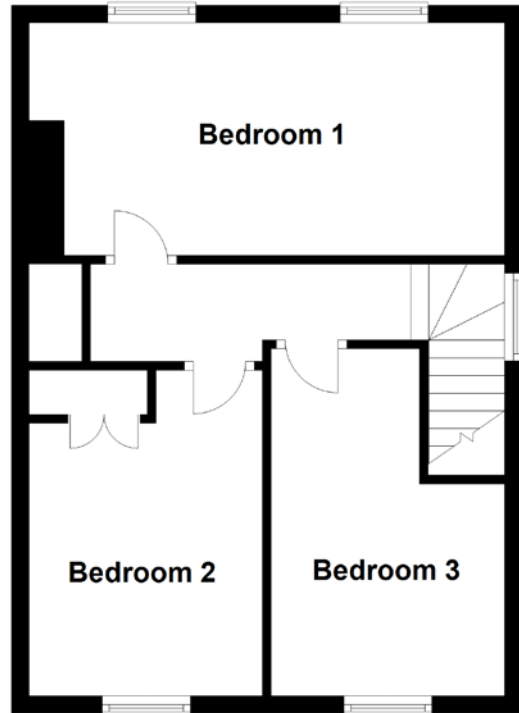
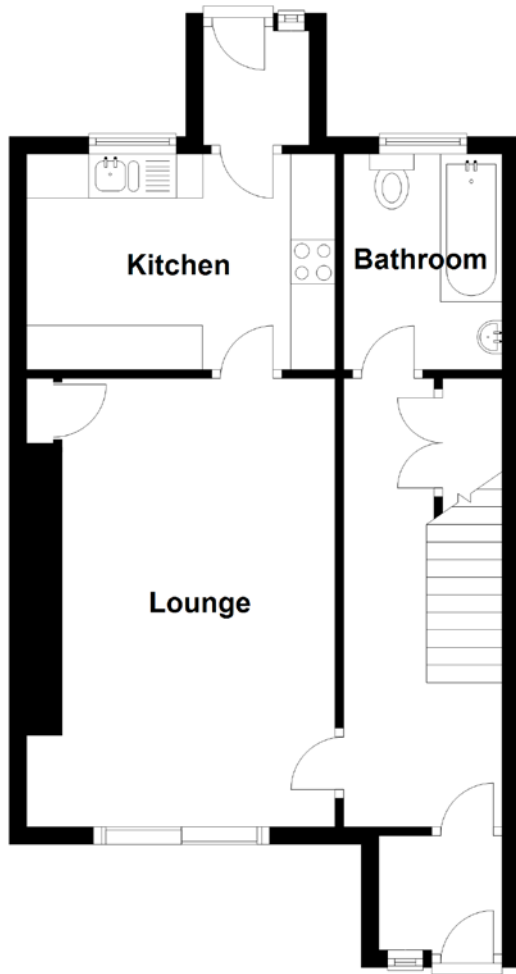


FLOOR PLAN, DIMENSIONS & MAP



Approximate Dimensions (Taken from the widest point)

| | |
|-----------|-------------------------------|
| Lounge | 5.10m (16'9") x 3.50m (11'6") |
| Kitchen | 3.50m (11'6") x 2.45m (8') |
| Bathroom | 2.45m (8') x 1.80m (5'11") |
| Bedroom 1 | 5.40m (17'9") x 2.65m (8'8") |
| Bedroom 2 | 3.70m (12'2") x 2.65m (8'8") |

Bedroom 3 3.95m (12'11") x 2.65m (8'8")

Gross internal floor area (m²): 84m²
EPC Rating: F

Extras: Carpets and floor coverings, light fixtures and fittings.

