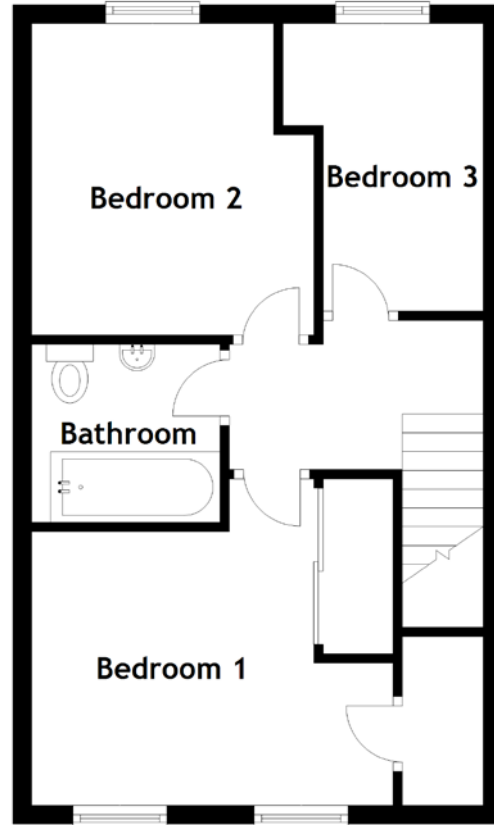
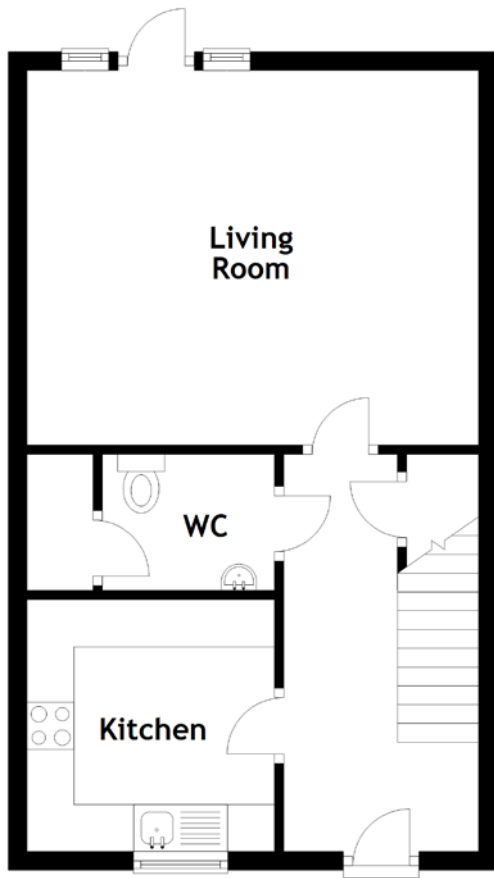


FLOOR PLAN, DIMENSIONS & MAP



Approximate Dimensions (Taken from the widest point)

| | |
|-------------|-------------------------------|
| Living Room | 4.80m (15'9") x 3.99m (13'1") |
| Kitchen | 2.68m (8'10") x 2.68m (8'10") |
| WC | 1.83m (6') x 1.45m (4'9") |
| Bedroom 1 | 3.89m (12'9") x 3.48m (11'5") |

| | |
|-----------|--------------------------------|
| Bedroom 2 | 3.32m (10'11") x 3.00m (9'10") |
| Bedroom 3 | 3.16m (10'4") x 1.70m (5'7") |
| Bathroom | 2.00m (6'7") x 1.89m (6'3") |

Gross internal floor area (m²): 81m²
EPC Rating: B

