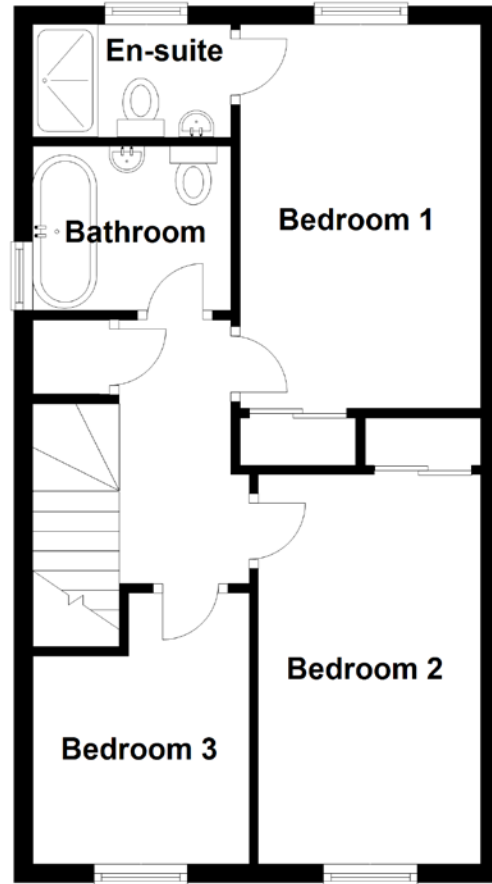
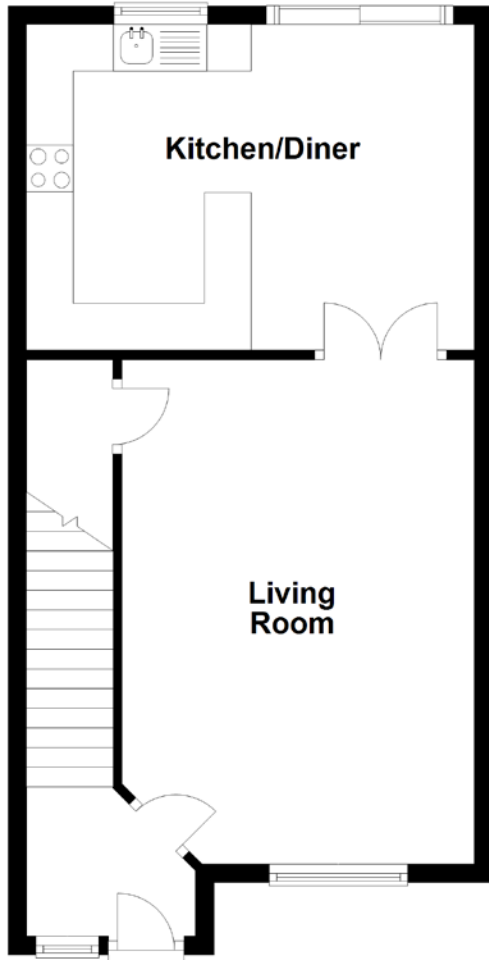


FLOOR PLAN, DIMENSIONS & MAP



Approximate Dimensions
(Taken from the widest point)

Kitchen/Diner 4.79m (15'9") x 3.48m (11'5")
 Living Room 5.39m (17'8") x 3.77m (12'4")
 Bathroom 2.12m (6'11") x 1.75m (5'9")

Bedroom 1 4.11m (13'6") x 2.57m (8'5")
 En-suite 2.12m (6'11") x 1.20m (3'11")
 Bedroom 2 4.16m (13'8") x 2.38m (7'10")
 Bedroom 3 2.89m (9'6") x 2.31m (7'7")

Gross internal floor area (m²): 89m² | EPC Rating: C

