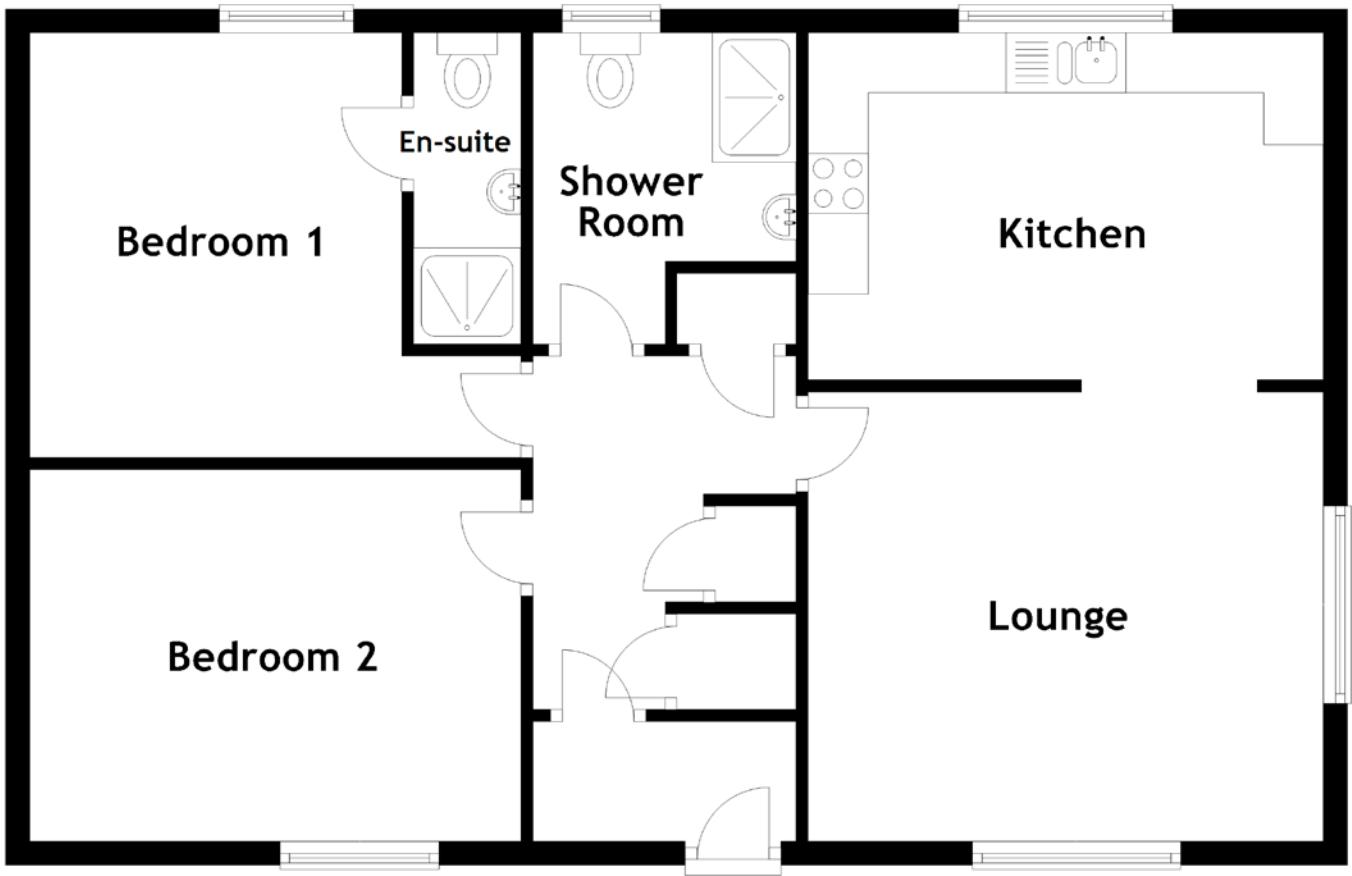


FLOOR PLAN, DIMENSIONS & MAP



Approximate Dimensions
(Taken from the widest point)

Lounge 4.40m (14'5") x 4.00m (13'2")
Kitchen 4.40m (14'5") x 2.90m (9'6")
Shower Room 2.70m (8'10") x 2.20m (7'3")

Bedroom 1 4.10m (13'5") x 3.55m (11'8")
En-suite 2.70m (8'10") x 0.90m (2'11")
Bedroom 2 4.10m (13'5") x 3.10m (10'2")

Gross internal floor area (m²): 76m²
EPC Rating: D

