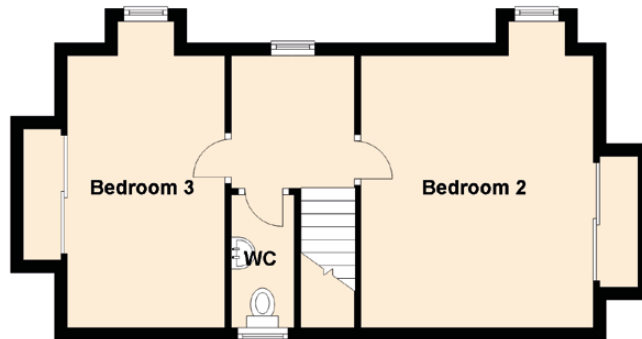
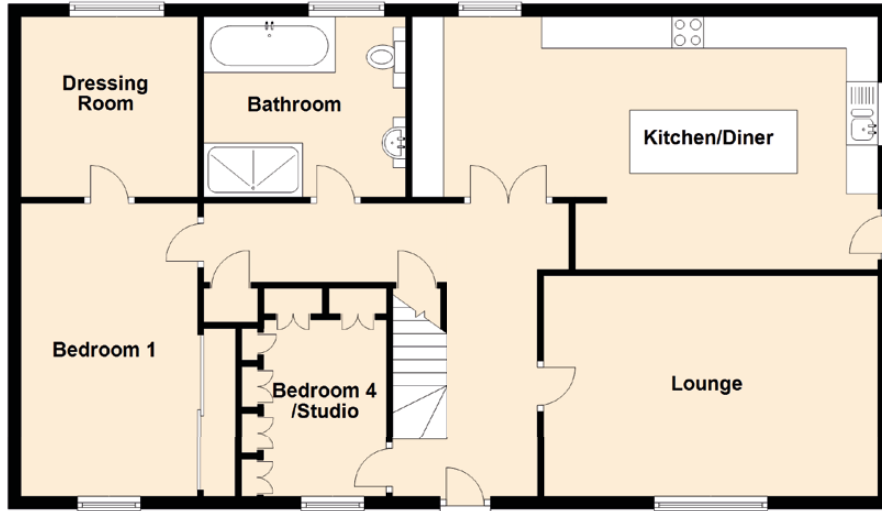


# 15 George Street

MORAY, PORTESSIE, AB56 1TL



Approximate Dimensions (Taken from the widest point)

Lounge	5.30m (17'5") x 3.50m (11'6")
Kitchen/Diner	6.80m (22'4") x 4.00m (13'1")
Bedroom 1	4.40m (14'5") x 2.80m (9'2")
Dressing Room	2.85m (9'4") x 2.80m (9'2")
Bedroom 2	4.30m (14'1") x 3.70m (12'2")
Bedroom 3	4.30m (14'1") x 2.50m (8'2")
Bedroom 4/Studio	3.30m (10'10") x 2.50m (8'2")
Bathroom	3.20m (10'6") x 2.85m (9'4")
WC	2.10m (6'11") x 1.00m (3'3")