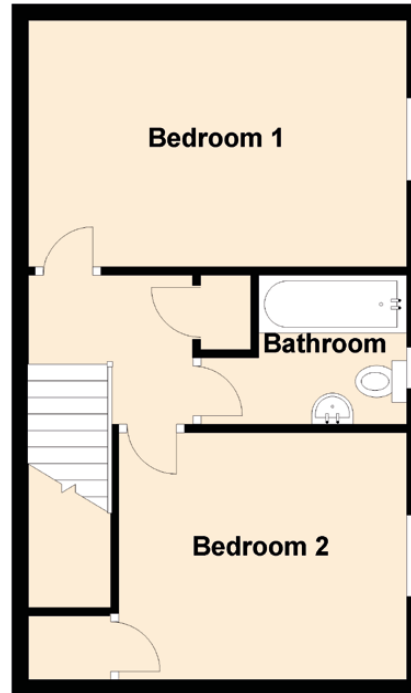
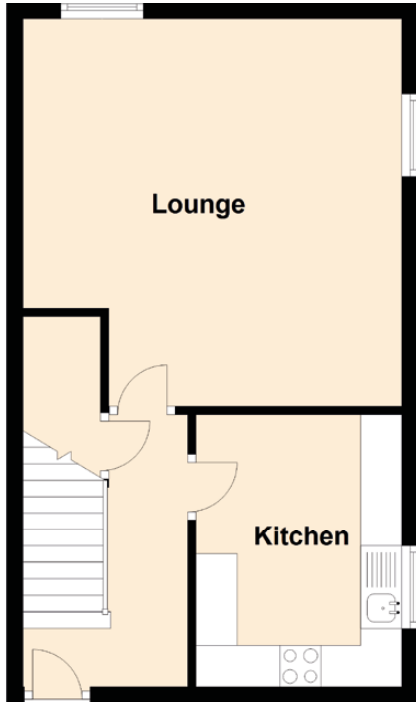


209 Dochart Terrace

DUNDEE, ANGUS, DD2 4EW



Approximate Dimensions (Taken from the widest point)

Ground Floor

Lounge 4.70m (15'5") x 4.60m (15'1")
Kitchen 3.30m (10'10") x 2.50m (8'2")

First Floor

Bedroom 1 4.60m (15'1") x 3.00m (9'10")
Bedroom 2 3.50m (11'6") x 3.00m (9'10")
Bathroom 2.50m (8'2") x 1.80m (5'11")