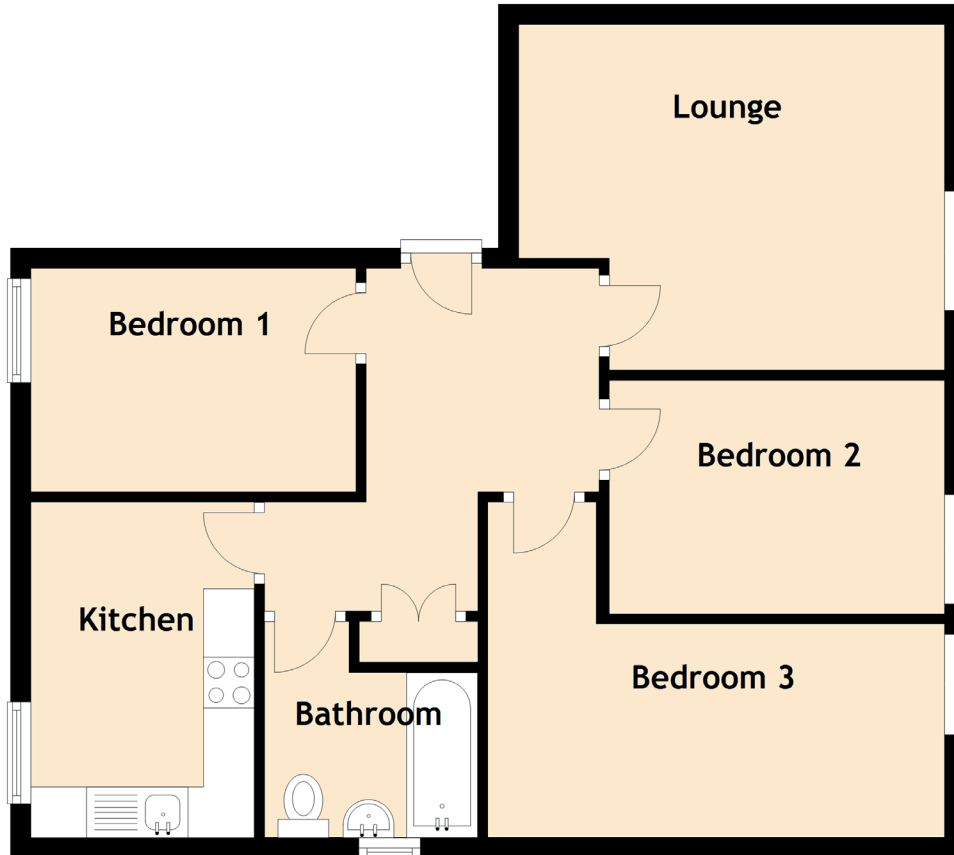


1F Wellington Street

DUNDEE, ANGUS, DD1 2QA



Approximate Dimensions (Taken from the widest point)

Lounge	4.40m (14'5") x 3.40m (11'2")
Kitchen	3.30m (10'10") x 2.20m (7'3")
Bedroom 1	3.20m (10'6") x 2.20m (7'3")
Bedroom 2	3.30m (10'10") x 2.30m (7'7")
Bedroom 3	4.50m (14'9") x 2.00m (6'7")
Bathroom	2.10m (6'11") x 2.00m (6'7")