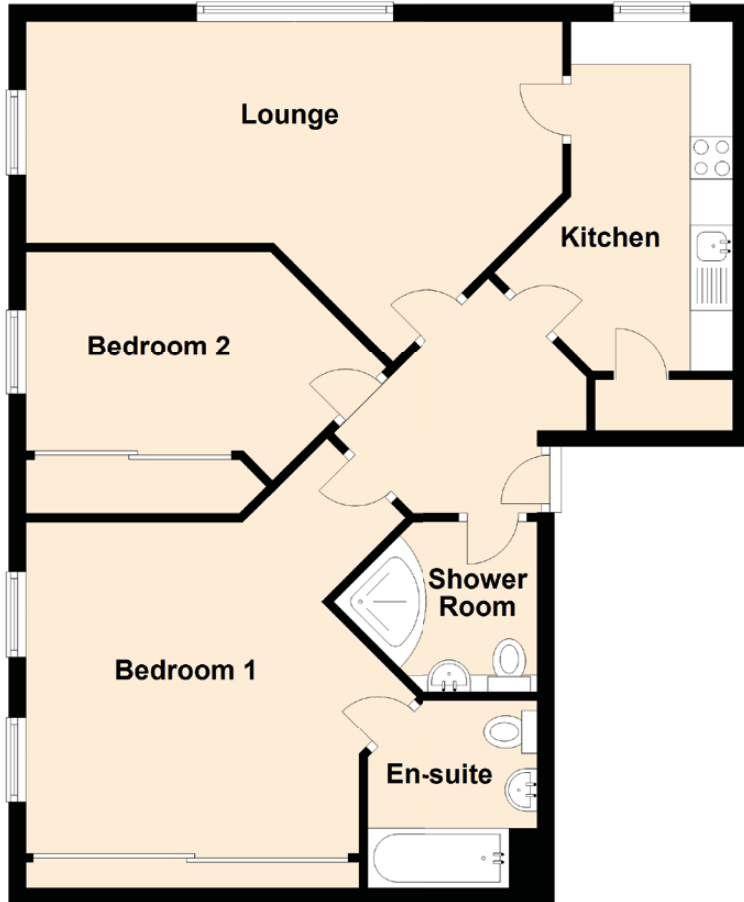


2 Back Wynd

QUEEN STREET, FORFAR, DD8 3AQ



Approximate Dimensions (Taken from the widest point)

Lounge	6.30m (20'8") x 4.00m (13'1")
Kitchen	4.10m (13'5") x 2.80m (9'2")
Bedroom 1	3.90m (12'10") x 3.50m (11'6")
En-suite	2.20m (7'3") x 2.00m (6'7")
Bedroom 2	2.90m (9'6") x 2.70m (8'10")
Shower Room	2.40m (7'10") x 2.30m (7'6")