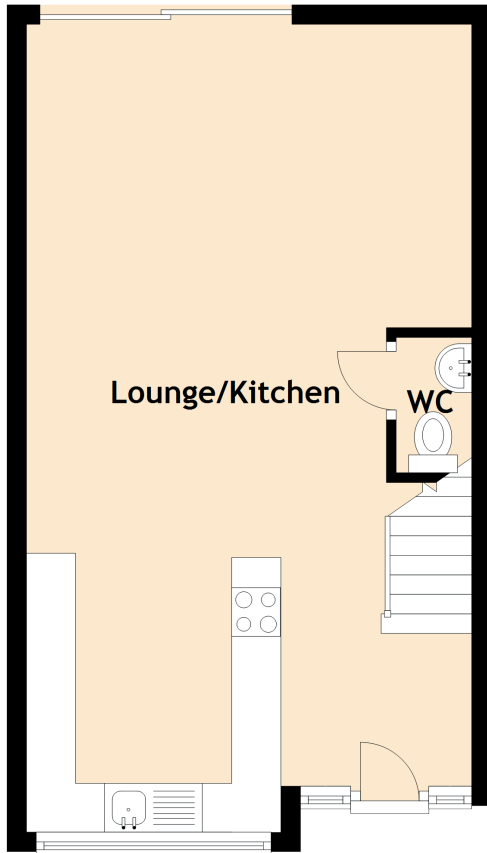


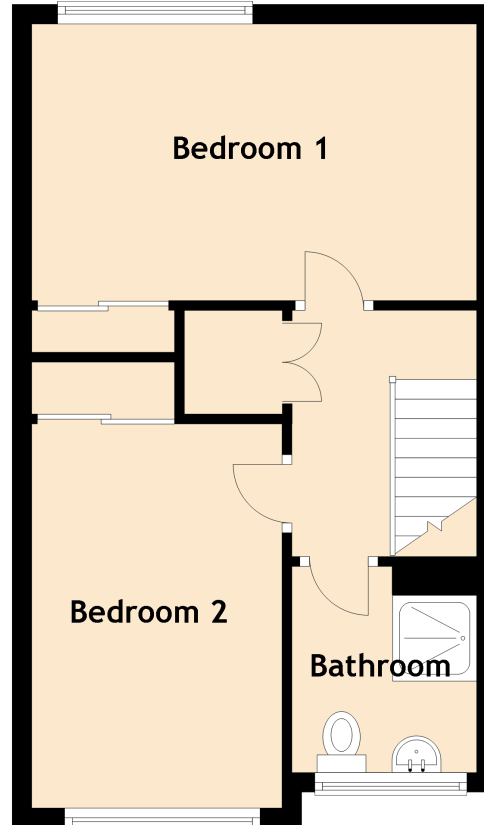
25 Hyvot View

EDINBURGH, EH17 8PQ

Ground Floor



First Floor



Approximate Dimensions (Taken from the widest point)

Ground Floor

Lounge/Kitchen 8.27m (27'2") x 4.55m (14'11")
WC 1.39m (4'7") x 0.77m (2'6")

First Floor

Bedroom 1 4.55m (14'11") x 2.83m (9'3")
Bedroom 2 3.93m (12'11") x 2.56m (8'5")
Bathroom 2.11m (6'11") x 1.87m (6'2")