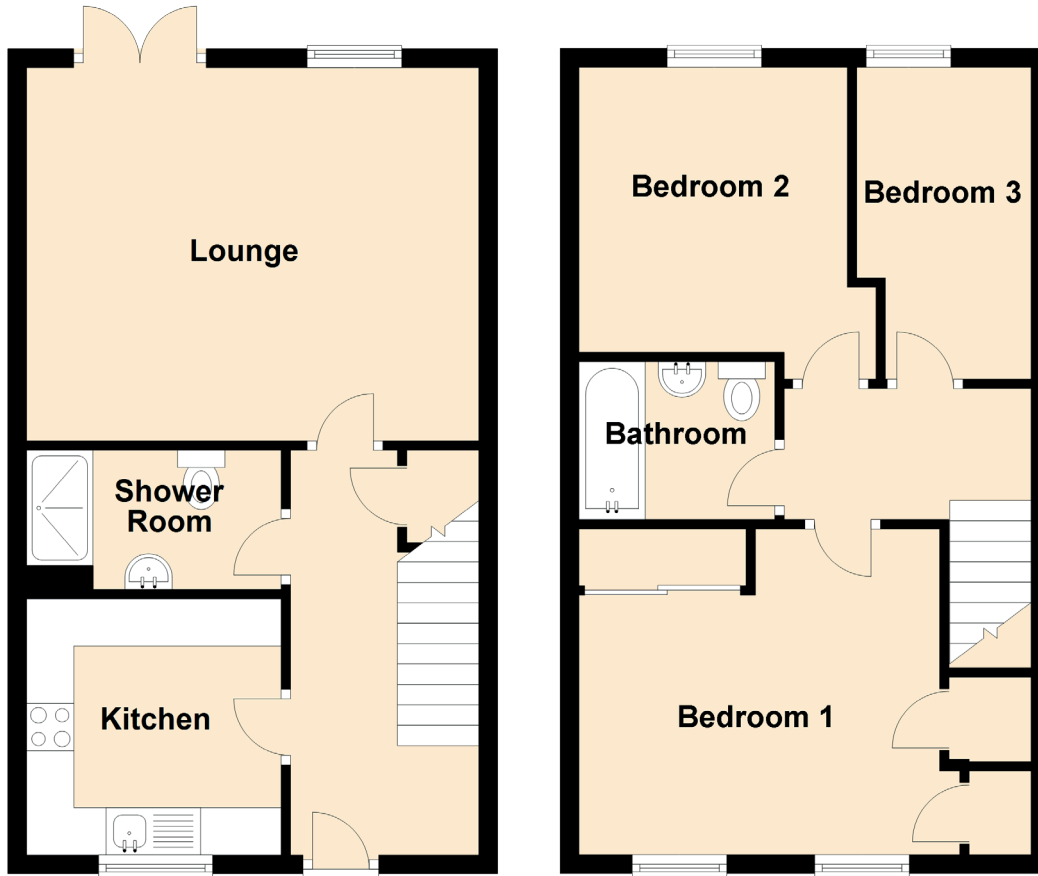


# 40 Kirklands Park Street

KIRKLISTON, EH29 9EY



Approximate Dimensions  
(Taken from the widest point)

Lounge	4.78m (15'8") x 3.95m (13')
Kitchen	2.71m (8'11") x 2.69m (8'10")
Bedroom 1	4.03m (13'3") x 3.44m (11'4")
Bedroom 2	3.33m (10'11") x 3.14m (10'4")
Bedroom 3	3.30m (10'10") x 1.86m (6'1")
Bathroom	2.07m (6'9") x 1.67m (5'6")
Shower Room	2.62m (8'7") x 1.47m (4'10")