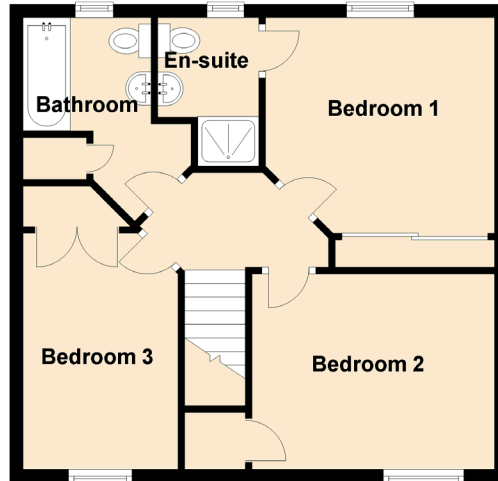
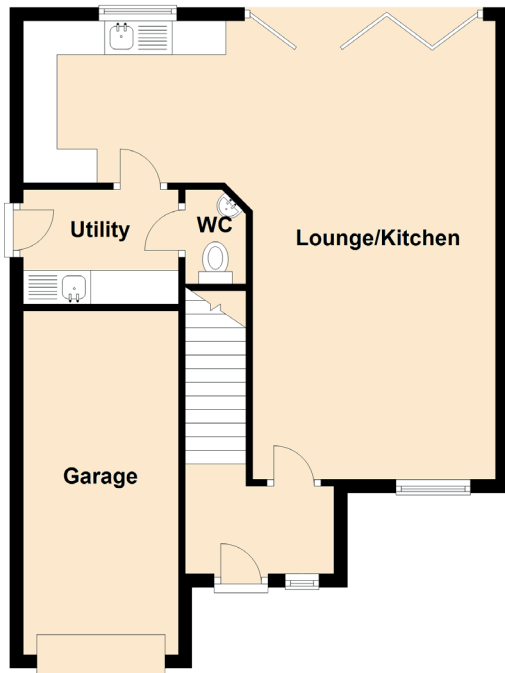


# 34 Moulin Way

DUNFERMLINE, FIFE, KY12 7QQ



Approximate Dimensions  
(Taken from the widest point)

Ground Floor

Lounge/Kitchen	7.00m (23') x 6.80m (22'4")
Utility	2.30m (7'7") x 1.70m (5'7")
WC	1.40m (4'7") x 0.90m (2'11")
Garage	5.10m (16'9") x 2.30m (7'7")

First Floor

Bedroom 1	3.40m (11'2") x 3.20m (10'6")
En-suite	2.20m (7'3") x 1.50m (4'11")
Bedroom 2	3.60m (11'10") x 2.90m (9'6")
Bedroom 3	3.50m (11'6") x 2.40m (7'10")
Bathroom	3.10m (10'2") x 1.90m (6'3")