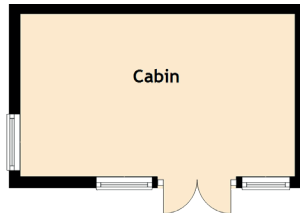
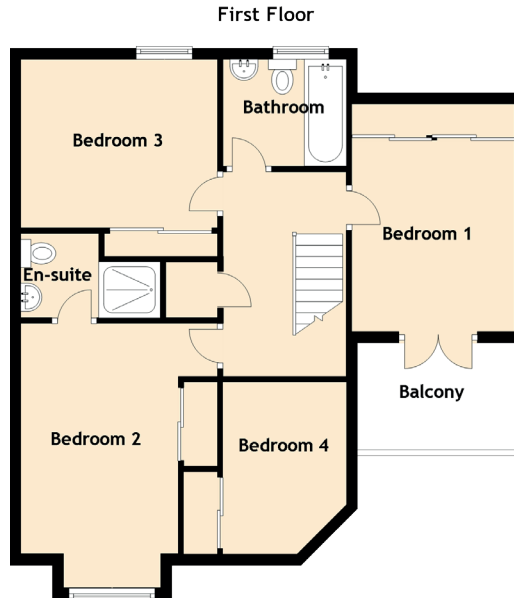
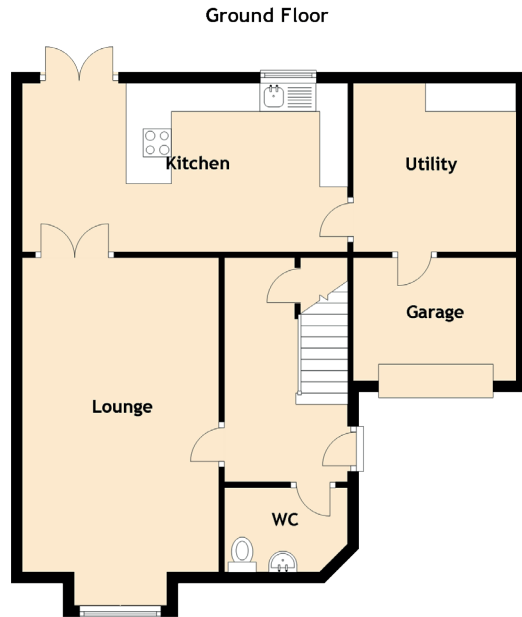


68 Balgillo Road

BROUGHTY FERRY, DUNDEE, DD5 3LX



Approximate Dimensions
(Taken from the widest point)

Ground Floor

Lounge	5.60m (18'4") x 3.50m (11'6")
Kitchen	5.80m (19') x 3.00m (9'10")
WC	2.20m (7'3") x 1.50m (4'11")
Utility	3.00m (9'10") x 2.90m (9'6")
Cabin	4.90m (16'1") x 2.90m (9'6")

First Floor

Bedroom 1	3.40m (11'2") x 2.90m (9'6")
Balcony	2.90m (9'6") x 2.00m (6'7")
Bedroom 2	4.71m (15'5") x 2.80m (9'2")
En-suite	2.60m (8'7") x 1.50m (4'11")
Bedroom 3	3.50m (11'6") x 3.00m (9'10")
Bedroom 4	2.90m (9'6") x 2.20m (7'3")
Bathroom	2.20m (7'3") x 1.90m (6'3")