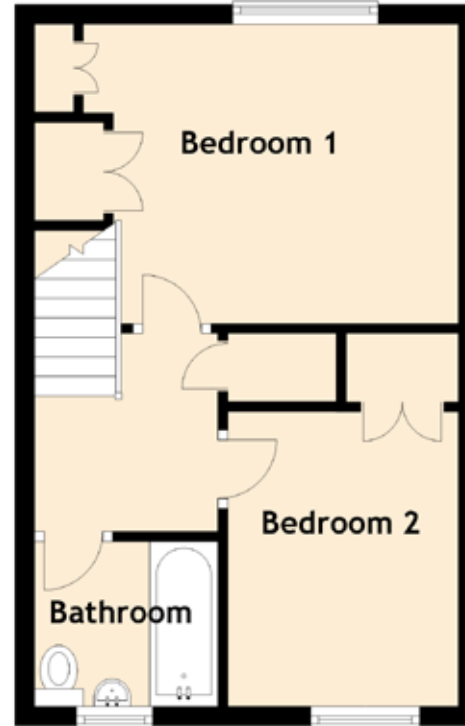
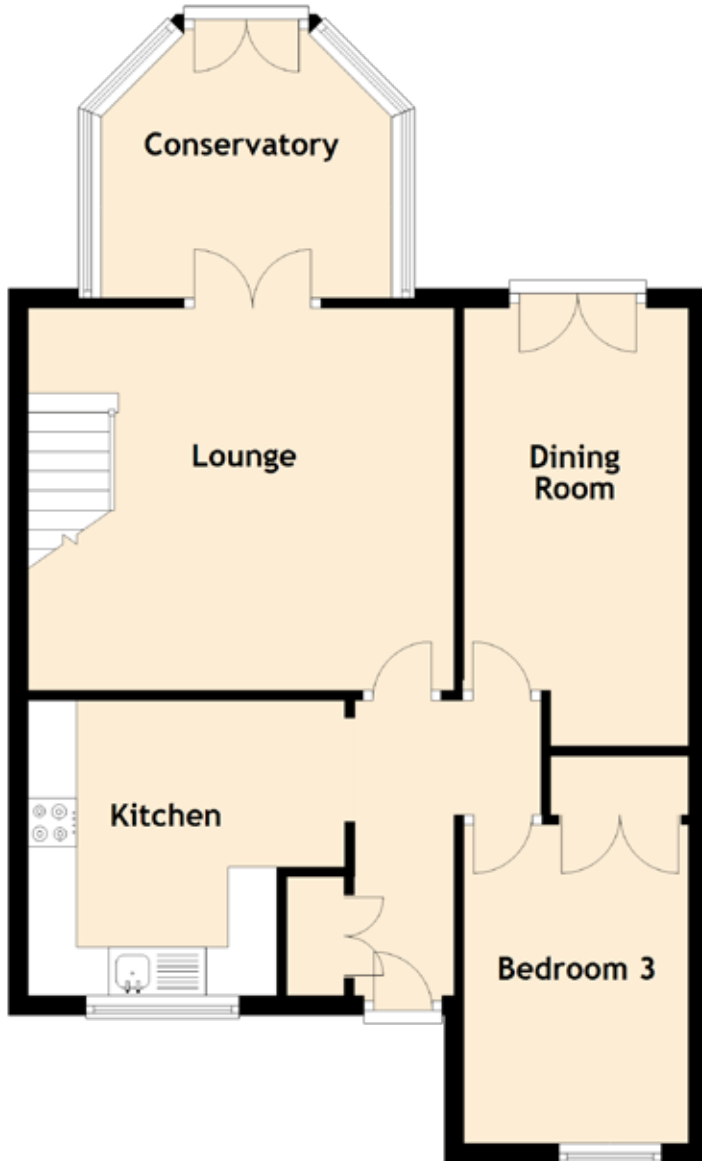


10 Whitecraig Avenue

WHITECRAIG, EAST LoTHIAN, EH21 8PE



Approximate Dimensions
(Taken from the widest point)

Lounge	4.37m (14'4") x 3.76m (12'4")
Kitchen	3.25m (10'8") x 3.03m (9'11")
Dining Room	4.49m (14'9") x 2.30m (7'7")
Conservatory	2.98m (9'9") x 2.71m (8'11")
Bedroom 1	3.77m (12'4") x 3.07m (10'1")
Bedroom 2	3.02m (9'11") x 2.36m (7'9")
Bedroom 3	3.27m (10'9") x 2.30m (7'7")
Bathroom	1.88m (6'2") x 1.69m (5'7")

Gross internal floor area (m²): 84m²

EPC Rating: C